

Product datasheet for **TA306880**

MARVELD1 Rabbit Polyclonal Antibody

Product data:

Product Type:	Primary Antibodies
Applications:	WB
Recommended Dilution:	WB: 1 - 2 ug/mL
Reactivity:	Human, Mouse, Rat
Host:	Rabbit
Isotype:	IgG
Clonality:	Polyclonal
Immunogen:	MARVELD1 antibody was raised against a 16 amino acid peptide from near the amino terminus of human MARVELD1.
Formulation:	PBS containing 0.02% sodium azide.
Concentration:	1ug/ul
Purification:	Affinity chromatography purified via peptide column
Conjugation:	Unconjugated
Storage:	Store at -20°C as received.
Stability:	Stable for 12 months from date of receipt.
Gene Name:	MARVEL domain containing 1
Database Link:	NP_113672

[Entrez Gene 277010 Mouse](#)[Entrez Gene 309375 Rat](#)[Entrez Gene 83742 Human](#)
[Q9BSK0](#)

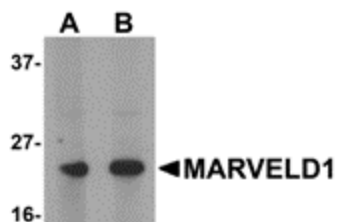
Background: MARVELD1, (MARVEL domain-containing 1), is one of the MARVEL (MAL and related proteins for vesicle trafficking and membrane link) domain-containing proteins. It is a nuclear-localized protein that is widely expressed in normal human tissues. While it has been reported to be overexpressed in colon cancer, MARVELD1 protein levels are generally lower in several primary tumors including ovary, breast, kidney, bladder and liver. This lower level of MARVELD1 expression in tumors is thought to be due to a higher methylation status of the MARVELD1 promoter as treatment of MDA-MB-361 with 5-aza-2'-deoxycytidine restores MARVELD1 expression (1,3), suggesting that loss of MARVELD1 expression may contribute to tumorigenicity.



[View online »](#)

Synonyms: bA548K23.8; GB14; MARVD1; MRVLDC1

Product images:



Western blot analysis of MARVELD1 in mouse heart tissue lysate with MARVELD1 antibody at (A) 1 and (B) 2 ug/ml.