

Product datasheet for **TA306879**

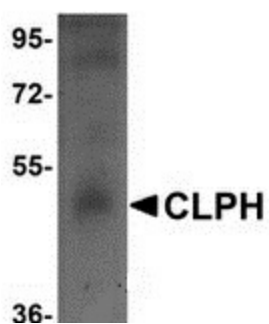
CABS1 Rabbit Polyclonal Antibody

Product data:

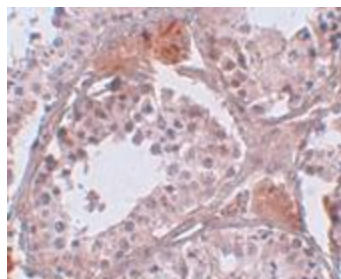
Product Type:	Primary Antibodies
Applications:	IHC, WB
Recommended Dilution:	WB: 1 ug/mL, ICC: 5 ug/mL
Reactivity:	Human, Rat
Host:	Rabbit
Isotype:	IgG
Clonality:	Polyclonal
Immunogen:	CLPH antibody was raised against a 15 amino acid peptide from near the carboxy terminus of human CLPH.
Formulation:	PBS containing 0.02% sodium azide.
Concentration:	1ug/ul
Purification:	Affinity chromatography purified via peptide column
Conjugation:	Unconjugated
Storage:	Store at -20°C as received.
Stability:	Stable for 12 months from date of receipt.
Gene Name:	calcium binding protein, spermatid associated 1
Database Link:	NP_149113 Entrez Gene 64029 Rat Entrez Gene 85438 Human Q96KC9
Background:	CLPH (Casein-Like phosphoprotein) is a recently discovered, evolutionarily conserved, testis-specific cytoplasmic protein expressed exclusively in postmeiotic germ cells in rat spermatogenesis. CLPH is a novel casein kinase 2-phosphorylated disordered and calcium-binding protein that displays strong variation in relative expression levels during spermatogenesis. It is frequently associated with the mitochondrial inner membrane during the last steps of spermatid differentiation and is involved in the extremely complex structural rearrangements occurring in haploid germ cells during spermiogenesis.
Synonyms:	C4orf35; CLPH; NYD-SP26



[View online »](#)

Product images:

Western blot analysis of CLPH in human testis tissue lysate with CLPH antibody at 1 ug/mL.



Immunohistochemistry of CLPH in human testis tissue with CLPH antibody at 5 ug/mL.