

Product datasheet for **TA306878**

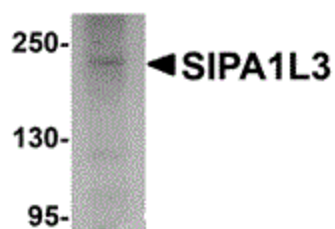
SIPA1L3 Rabbit Polyclonal Antibody

Product data:

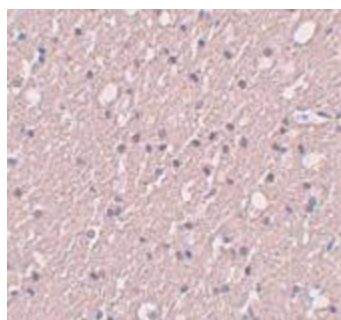
Product Type:	Primary Antibodies
Applications:	IF, IHC, WB
Recommended Dilution:	WB: 1 ug/mL, ICC: 5 ug/mL, IF: 20 ug/mL
Reactivity:	Human, Mouse, Rat
Host:	Rabbit
Isotype:	IgG
Clonality:	Polyclonal
Immunogen:	SIPA1L3 antibody was raised against a 15 amino acid peptide from near the amino terminus of human SIPA1L3.
Formulation:	PBS containing 0.02% sodium azide.
Concentration:	1ug/ul
Purification:	Affinity chromatography purified via peptide column
Conjugation:	Unconjugated
Storage:	Store at -20°C as received.
Stability:	Stable for 12 months from date of receipt.
Gene Name:	signal induced proliferation associated 1 like 3
Database Link:	NP_055888 Entrez Gene 74206 Mouse Entrez Gene 292771 Rat Entrez Gene 23094 Human O60292
Background:	Signal-induced proliferation associated-like protein 2 (SIPA1L3) is a member of the SIPA1 family of RapGAPs. SIPA1L3 was cloned as a novel molecular component of tight junctions and adherens junctions, suggesting that may function to balance Rap1 by counteracting RapGEFs. Recent studies of SIPA indicate that its deregulation can cause myeloproliferative stem cell disorders in mice (3) and increased metastases in human cancers. Other studies suggest SIPA1L1 may play important roles in embryo development and control of cell proliferation. Based on the amount of homology between SIPA family members, it is possible that SIPA1L3 plays other roles development and cell proliferation.
Synonyms:	SPAL3



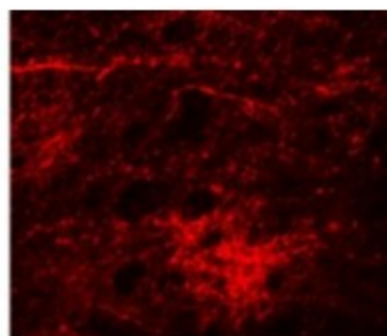
[View online »](#)

Product images:

Western blot analysis of SIPA1L3 in SK-N-SH lysate with SIPA1L3 antibody at 1 ug/mL.



Immunohistochemistry of SIPA1L3 in human brain tissue with SIPA1L3 antibody at 5 ug/mL.



Immunofluorescence of SIPA1L3 in Human Brain cells with SIPA1L3 antibody at 20 ug/mL.