

## Product datasheet for **TA306876**

### SIPA1L1 Rabbit Polyclonal Antibody

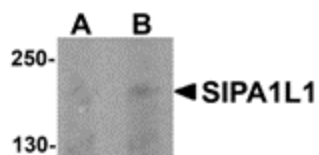
#### Product data:

Product Type:	Primary Antibodies
Applications:	IF, IHC, WB
Recommended Dilution:	WB: 0.5 - 1 ug/mL, ICC: 5 ug/mL, IF: 20 ug/mL
Reactivity:	Human, Mouse, Rat
Host:	Rabbit
Isotype:	IgG
Clonality:	Polyclonal
Immunogen:	SIPA1L1 antibody was raised against a 16 amino acid peptide from near the amino terminus of human SIPA1L1.
Formulation:	PBS containing 0.02% sodium azide.
Concentration:	1ug/ul
Purification:	Affinity chromatography purified via peptide column
Conjugation:	Unconjugated
Storage:	Store at -20°C as received.
Stability:	Stable for 12 months from date of receipt.
Gene Name:	signal induced proliferation associated 1 like 1
Database Link:	<a href="#">NP_056371</a> <a href="#">Entrez Gene 217692 Mouse</a> <a href="#">Entrez Gene 246212 Rat</a> <a href="#">Entrez Gene 26037 Human</a> <a href="#">O43166</a>
Background:	Signal-induced proliferation associated-like protein 1 (SIPA1L1) is a member of the SIPA1 family of RapGAPs. SIPA1L1 was initially identified as a binding partner and degradation target of the E6 oncoprotein of high-risk papillomaviruses. Recently, it was discovered that Casein kinase I epsilon (CKIε), a Wnt-regulated kinase that regulates Wnt/b-catenin signaling, also can bind to the carboxy-terminus of SIPA1L1. CKIε phosphorylates SIPA1L1, thereby reducing its stability and alleviating its inhibition of Rap1, a protein required for Wnt8/CKIε-mediated gastrulation during embryogenesis, suggesting SIPA1L1 plays important roles in embryo development as well as control of cell proliferation.
Synonyms:	E6TP1

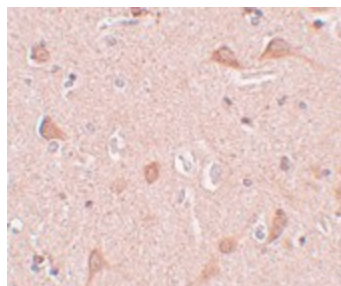


[View online »](#)

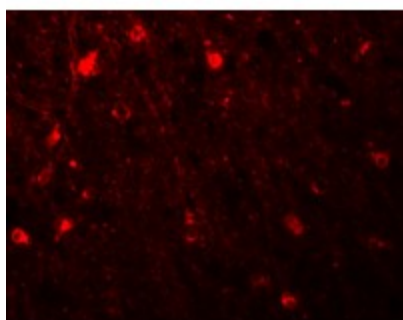
## Product images:



Western blot analysis of SIPA1L1 in rat brain tissue lysate with SIPA1L1 antibody at (A) 0.5 and (B) 1 ug/ml.



Immunohistochemistry of SIPA1L1 in human brain tissue with SIPA1L1 antibody at 5 ug/ml.



Immunofluorescence of SIPA1L1 in human brain tissue with SIPA1L1 antibody at 20 ug/mL.