

Product datasheet for **TA306873**

PLEKHM1 Rabbit Polyclonal Antibody

Product data:

Product Type:	Primary Antibodies
Applications:	IF, IHC, WB
Recommended Dilution:	WB: 1 ug/mL, ICC: 5 ug/mL, IF: 20 ug/mL
Reactivity:	Human
Host:	Rabbit
Isotype:	IgG
Clonality:	Polyclonal
Immunogen:	PLEKHM1 antibody was raised against an 18 amino acid peptide from near the amino terminus of human PLEKHM1.
Formulation:	PBS containing 0.02% sodium azide.
Concentration:	1 mg/ml
Purification:	Affinity chromatography purified via peptide column
Conjugation:	Unconjugated
Storage:	Store at -20°C as received.
Stability:	Stable for 12 months from date of receipt.
Gene Name:	pleckstrin homology and RUN domain containing M1
Database Link:	NP_055613 Entrez Gene 9842 Human Q9Y4G2



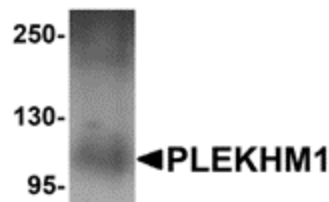
[View online »](#)

Background:

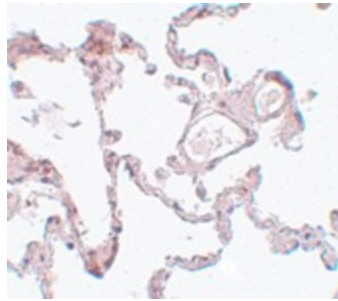
PLEKHM1 is a member of the M family of Pleckstrin homolog domain-containing proteins, a group of proteins containing a RUN domain, two pleckstrin homology domains, and a cysteine-rich domain. It was identified through segregation analysis as a cause of osteopetrosis in humans. PLEKHM1 co-localizes with Rab7 to late endosomal/lysosomal vesicles in HEK293 and osteoclast-like cells, with this co-localization dependent on the prenylation of Rab7. Monocytes from a patient homozygous for a mutated form of PLEKHM1 differentiated into osteoclasts normally, but failed to form ruffled borders and showed little evidence of bone resorption when cultured on dentine discs. Another mutation of PLEKHM1 impaired vesicular acidification and increased TRACP secretion in osteoclasts, suggesting that PLEKHM1 has critical roles in endosomal maturation and may be important in osteoclast-osteoblast cross-talk.

Synonyms:

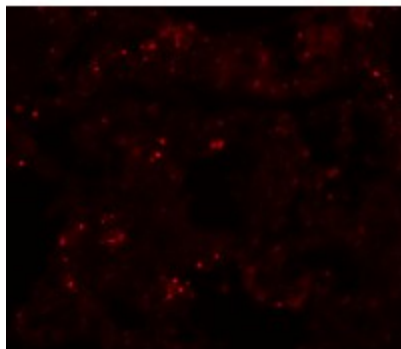
AP162; B2; OPTB6

Product images:

Western blot analysis of PLEKHM1 in human lung tissue lysate with PLEKHM1 antibody at 1 ug/ml.



Immunohistochemistry of PLEKHM1 in human lung tissue with PLEKHM1 antibody at 5 ug/ml.



Immunofluorescence of PLEKHM1 in human lung tissue with PLEKHM1 antibody at 20 ug/mL.