

## Product datasheet for **TA306872**

### **FAM59B (GAREM2) Rabbit Polyclonal Antibody**

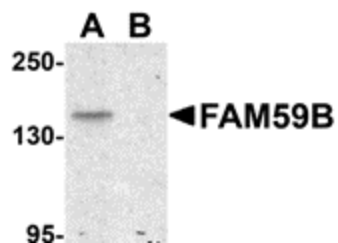
#### **Product data:**

Product Type:	Primary Antibodies
Applications:	IF, IHC, WB
Recommended Dilution:	WB: 1 ug/mL, ICC: 5 ug/mL, IF: 20 ug/mL
Reactivity:	Human, Mouse, Rat
Host:	Rabbit
Isotype:	IgG
Clonality:	Polyclonal
Immunogen:	FAM59B antibody was raised against a 19 amino acid peptide from near the carboxy terminus of human FAM59B.
Formulation:	PBS containing 0.02% sodium azide.
Concentration:	1ug/ul
Purification:	Affinity chromatography purified via peptide column
Conjugation:	Unconjugated
Storage:	Store at -20°C as received.
Stability:	Stable for 12 months from date of receipt.
Gene Name:	GRB2 associated regulator of MAPK1 subtype 2
Database Link:	<a href="#">NP_001161713</a> <a href="#">Entrez Gene 242915 Mouse</a> <a href="#">Entrez Gene 362801 Rat</a> <a href="#">Entrez Gene 150946 Human</a> <a href="#">Q75VX8</a>
Background:	FAM59B is related to the FAM59A protein (also known as GAREM). While little is known of the role of the FAM59B protein, FAM59A is a downstream molecule in the EGF signaling pathway and binds Grb2, an adaptor protein crucial to the transduction of growth signals from the plasma membrane to the nucleus. Like FAM59A, FAM59B may play a role in ligand-mediated signaling pathway of the EGF receptor and the tumorigenesis of cells.
Synonyms:	FAM59B; GAREML

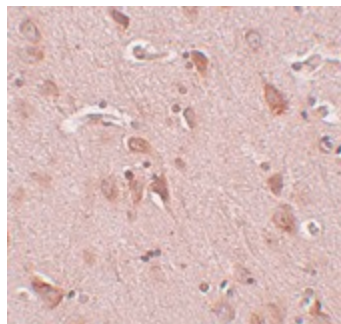


[View online »](#)

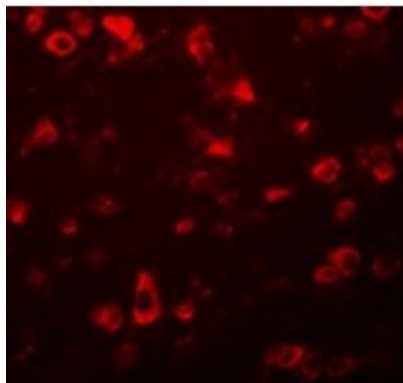
## Product images:



Western blot analysis of FAM59B in SK-N-SH cell lysate with FAM59B antibody at 1 ug/ml in (A) the absence and (B) the presence of blocking peptide.



Immunohistochemistry of FAM59B in human brain tissue with FAM59B antibody at 5 ug/ml.



Immunofluorescence of FAM59B in Human Brain cells with FAM59B antibody at 20 ug/mL.