

Product datasheet for **TA306871**

FAM59A (GAREM1) Rabbit Polyclonal Antibody

Product data:

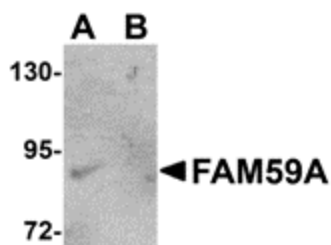
Product Type:	Primary Antibodies
Applications:	IF, IHC, WB
Recommended Dilution:	WB: 1 - 2 ug/mL, ICC: 5 ug/mL, IF: 20 ug/mL
Reactivity:	Human, Mouse, Rat
Host:	Rabbit
Isotype:	IgG
Clonality:	Polyclonal
Immunogen:	FAM59A antibody was raised against a 19 amino acid peptide from near the carboxy terminus of human FAM59A.
Formulation:	PBS containing 0.02% sodium azide.
Concentration:	1ug/ul
Purification:	Affinity chromatography purified via peptide column
Conjugation:	Unconjugated
Storage:	Store at -20°C as received.
Stability:	Stable for 12 months from date of receipt.
Gene Name:	GRB2 associated regulator of MAPK1 subtype 1
Database Link:	NP_073588 Entrez Gene 381126 Mouse Entrez Gene 679154 Rat Entrez Gene 64762 Human Q9H706
Background:	FAM59A, also known as GAREM, was initially identified through a mass spectroscopic method that measures different phosphotyrosine states of proteins in response to different cell stimuli. FAM59A is a downstream molecule in the EGF signaling pathway that is tyrosine-phosphorylated, and this phosphorylation is needed for the binding of Grb2, an adaptor protein crucial to the transduction of growth signals from the plasma membrane to the nucleus. ERK activation in response to EGF stimulation is regulated by FAM59A in COS-7 and HeLa cells, and the overexpression of FAM59A stimulated cell proliferation and colony formation in soft agar, suggesting that FAM59A might be a critical protein with roles in ligand-mediated signaling pathway of the EGF receptor and the tumorigenesis of cells.



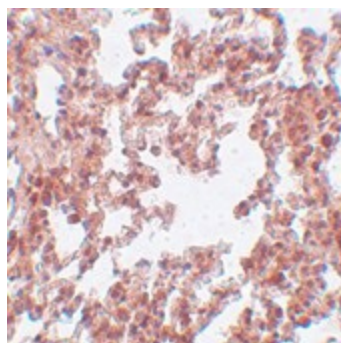
[View online »](#)

Synonyms: C18orf11; FAM59A; Gm944

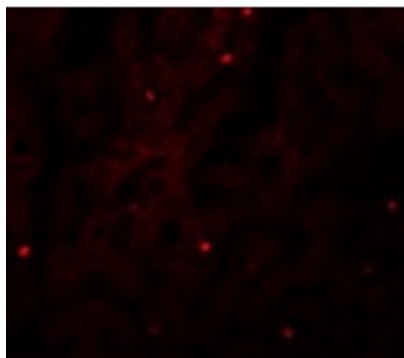
Product images:



Western blot analysis of FAM59A in rat liver tissue lysate with FAM59A antibody at (A) 1 and (B) 2 ug/ml.



Immunohistochemistry of PLEKHM3 in human brain tissue with PLEKHM3 antibody at 5 ug/ml.



Immunofluorescence of FAM59A in Human Liver cells with FAM59A antibody at 20 ug/mL.