

Product datasheet for **TA306870**

SRPX2 Rabbit Polyclonal Antibody

Product data:

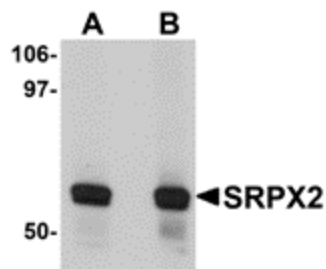
Product Type:	Primary Antibodies
Applications:	IF, IHC, WB
Recommended Dilution:	WB: 1 - 2 ug/mL, ICC: 5 ug/mL, IF: 20 ug/mL
Reactivity:	Human, Mouse, Rat
Host:	Rabbit
Isotype:	IgG
Clonality:	Polyclonal
Immunogen:	SRPX2 antibody was raised against a 16 amino acid peptide from near the amino terminus of human SRPX2.
Formulation:	PBS containing 0.02% sodium azide.
Concentration:	1ug/ul
Purification:	Affinity chromatography purified via peptide column
Conjugation:	Unconjugated
Storage:	Store at -20°C as received.
Stability:	Stable for 12 months from date of receipt.
Gene Name:	sushi repeat containing protein, X-linked 2
Database Link:	NP_055282 Entrez Gene 68792 Mouse Entrez Gene 317181 Rat Entrez Gene 27286 Human O60687
Background:	Sushi-repeat-containing protein X-linked 2 (SRPX2) is a neural gene functioning in the speech and language center of the human brain; mutations in this gene lead to epilepsy, speech dyspraxia, mental retardation and cognitive disorders. Recently, SRPX2 was found to be a novel mediator of angiogenesis and can act as a ligand for the urokinase-type plasminogen activator, a protein that can facilitate invasive migration of sprouting endothelial cells. SRPX2 is also overexpressed in gastric cancer, leading to increased phosphorylation levels of focal adhesion kinase and enhanced cellular migration and adhesion, suggesting that SRPX2 may be a potential target in the treatment of metastatic cancers.
Synonyms:	BPP; CBPS; PMGX; RESDX; SRPUL



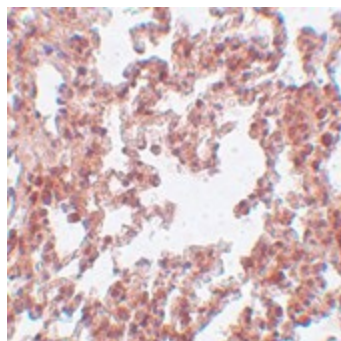
[View online »](#)

Protein Families: Druggable Genome, Secreted Protein

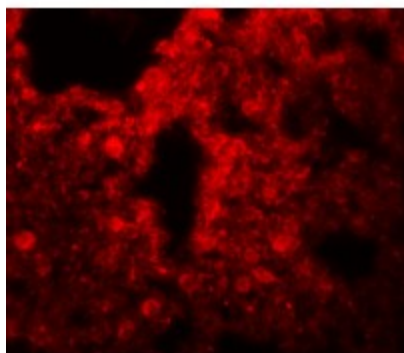
Product images:



Western blot analysis of SRPX2 in human lung tissue lysate with SRPX2 antibody at (A) 1 and (B) 2 ug/ml.



Immunohistochemistry of SRPX2 in rat lung tissue with SRPX2 antibody at 5 ug/ml.



Immunofluorescence of SRPX2 in human lung tissue with SRPX2 antibody at 20 ug/mL.