

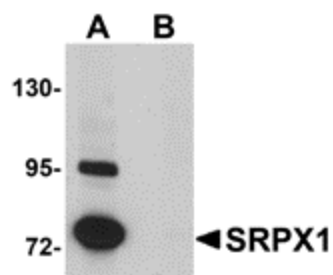
Product datasheet for **TA306869**

SRPX Rabbit Polyclonal Antibody

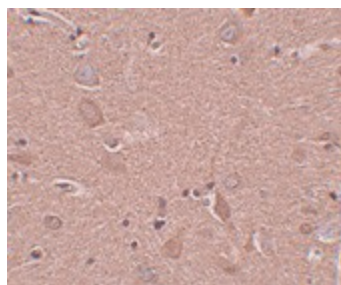
Product data:

Product Type:	Primary Antibodies
Applications:	IF, IHC, WB
Recommended Dilution:	WB: 0.25 ug/mL, ICC: 5 ug/mL, IF: 20 ug/mL
Reactivity:	Human, Mouse, Rat
Host:	Rabbit
Isotype:	IgG
Clonality:	Polyclonal
Immunogen:	SRPX1 antibody was raised against a 13 amino acid peptide from near the amino terminus of human SRPX1.
Formulation:	PBS containing 0.02% sodium azide.
Concentration:	1ug/ul
Purification:	Affinity chromatography purified via peptide column
Conjugation:	Unconjugated
Storage:	Store at -20°C as received.
Stability:	Stable for 12 months from date of receipt.
Gene Name:	sushi repeat containing protein, X-linked
Database Link:	NP_006298 Entrez Gene 8406 Human P78539
Background:	SRPX1 was initially identified as a candidate gene for X-linked retinitis pigmentosa and is overexpressed in the trabecular network of the eye in glaucoma conditions. Its expression is significantly downregulated in a number cancer cell lines and malignant tumor tissues and its ectopic expression induces apoptosis through the endoplasmic reticulum and the activation of caspase-12, -9, and -3, indicating that it can function as a tumor suppressor. SRPX1 is also involved with the regulation of autophagy under low serum conditions and can associate with Rab24, a member of the Rab GTPase protein family that is involved in autophagy. This association of SRPX1 with Rab24 is enhanced during autophagy.
Synonyms:	DRS; ETX1; HEL-S-83p; SRPX1

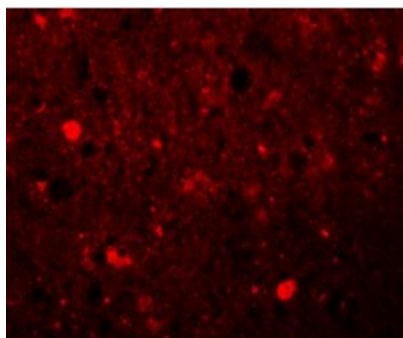

[View online »](#)

Product images:


Western blot analysis of SRPX1 in SK-N-SH cell lysate with SRPX1 antibody at 0.25 ug/ml in (A) the absence and (B) the presence of blocking peptide.



Immunohistochemistry of SRPX1 in human brain tissue with SRPX1 antibody at 5 ug/ml.



Immunofluorescence of SRPX1 in human brain tissue with SRPX1 antibody at 20 ug/mL.