

Product datasheet for **TA306859**

Mimitin (NDUFAF2) Rabbit Polyclonal Antibody

Product data:

Product Type:	Primary Antibodies
Applications:	IF, WB
Recommended Dilution:	WB: 1 - 2 ug/mL, IF: 20 ug/mL
Reactivity:	Human
Host:	Rabbit
Isotype:	IgG
Clonality:	Polyclonal
Immunogen:	Mimitin antibody was raised against a 14 amino acid peptide from near the carboxy terminus of human Mimitin.
Formulation:	PBS containing 0.02% sodium azide.
Concentration:	1ug/ul
Purification:	Affinity chromatography purified via peptide column
Conjugation:	Unconjugated
Storage:	Store at -20°C as received.
Stability:	Stable for 12 months from date of receipt.
Gene Name:	NADH:ubiquinone oxidoreductase complex assembly factor 2
Database Link:	NP_777549 Entrez Gene 91942 Human Q8N183

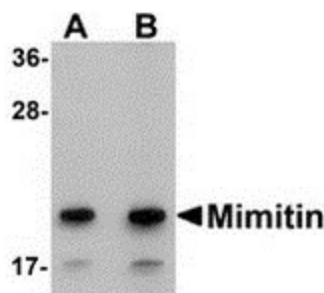
[View online »](#)

Background:

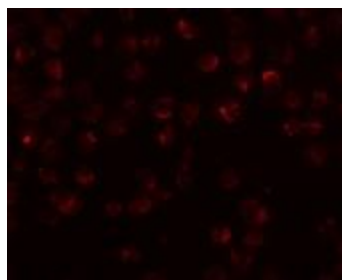
Mimitin, a small mitochondrial protein, whose transcription is directly stimulated by c-Myc, is highly expressed in 80% of esophageal squamous cell carcinomas (ESCC). Suppression of Mimitin expression by RNA interference had no effect in cancerous cell lines such as human cervical carcinoma or hepatocarcinoma cell lines, but caused a decrease in cell proliferation in human glioblastoma, embryonic lung fibroblastic cells, and ESCC, suggesting Mimitin may play a special role in these types of cells. Mimitin expression is also regulated by MAPK kinases and IL-1, but not through the NF- κ B-related pathway. It will interact with the microtubular protein MAP1S and can affect the activities of caspase-3 and -7 in cells stimulated to develop apoptosis. Other experiments suggest that Mimitin also acts as a molecular chaperone for the assembly of the mitochondrial complex I.

Synonyms:

B17.2L; mimitin; MMTN; NDUFA12L

Product images:


Western blot analysis of Mimitin in Raji cell lysate with Mimitin antibody at (A) 1 and (B) 2 ug/mL.



Immunofluorescence of Mimitin in Raji cells with Mimitin antibody at 20 ug/mL.