

Product datasheet for **TA306857**

GOLPH2 (GOLM1) Rabbit Polyclonal Antibody

Product data:

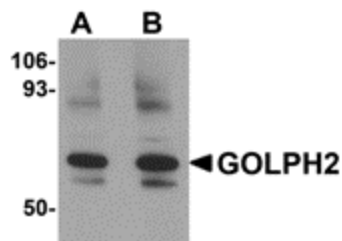
Product Type:	Primary Antibodies
Applications:	IF, IHC, WB
Recommended Dilution:	WB: 0.25 - 0.5 ug/mL, ICC: 2.5 ug/mL, IF: 20 ug/mL
Reactivity:	Human, Mouse, Rat
Host:	Rabbit
Isotype:	IgG
Clonality:	Polyclonal
Immunogen:	GOLPH2 antibody was raised against an 18 amino acid peptide from near the center of human GOLPH2.
Formulation:	PBS containing 0.02% sodium azide.
Concentration:	1ug/ul
Purification:	Affinity chromatography purified via peptide column
Conjugation:	Unconjugated
Storage:	Store at -20°C as received.
Stability:	Stable for 12 months from date of receipt.
Gene Name:	golgi membrane protein 1
Database Link:	NP_057632 Entrez Gene 105348 Mouse Entrez Gene 680692 Rat Entrez Gene 51280 Human Q8NBJ4
Background:	GOLPH2, also known as GOLM1, is a Golgi phosphoprotein that has a short cytoplasmic N-terminal domain, a membrane spanning region, and a longer C-terminal domain. It was initially identified as a possible marker for Alzheimer's disease, although later studies have demonstrated that the GOLPH2 gene does not contribute to risk of this disease. GOLPH2 expression has been reported higher in prostate cancer tissues compared to normal prostate tissue, suggesting that GOLPH2 can be used as an additional positive marker for tissue-based diagnosis of prostate cancer. It has been suggested that GOLPH2 expression in hepatocellular carcinomas (HCCs) and serum may also serve as tumor markers for HCCs.
Synonyms:	bA379P1.3; C9orf155; GOLPH2; GP73; HEL46; PSEC0257



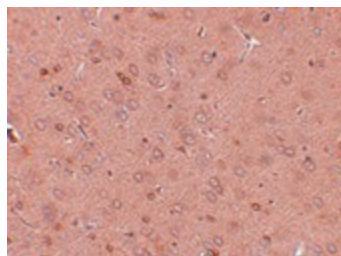
[View online »](#)

Protein Families: Transmembrane

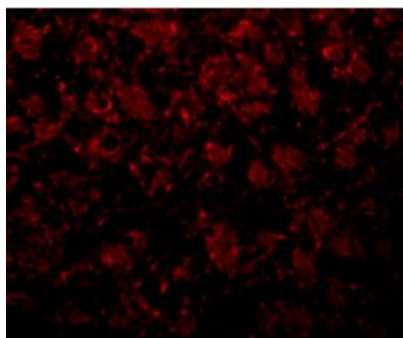
Product images:



Western blot analysis of GOLPH2 in rat brain tissue lysate with GOLPH2 antibody at (A) 0.25 and (B) 0.5 ug/ml.



Immunohistochemistry of GOLPH2 in rat brain tissue with GOLPH2 antibody at 2.5 ug/ml.



Immunofluorescence of GOLPH2 in rat brain tissue with GOLPH2 antibody at 20 ug/mL.