

## Product datasheet for **TA306853**

### CENPO Rabbit Polyclonal Antibody

#### Product data:

Product Type:	Primary Antibodies
Applications:	WB
Recommended Dilution:	WB: 1 - 2 ug/mL
Reactivity:	Human, Mouse, Rat
Host:	Rabbit
Isotype:	IgG
Clonality:	Polyclonal
Immunogen:	CENPO antibody was raised against a 16 amino acid peptide from near the center of human CENPO.
Formulation:	PBS containing 0.02% sodium azide.
Concentration:	1ug/ul
Purification:	Affinity chromatography purified via peptide column
Conjugation:	Unconjugated
Storage:	Store at -20°C as received.
Stability:	Stable for 12 months from date of receipt.
Gene Name:	centromere protein O
Database Link:	<a href="#">NP_077298</a>

[Entrez Gene 52504 Mouse](#)[Entrez Gene 684439 Rat](#)[Entrez Gene 79172 Human](#)  
[Q9BU64](#)

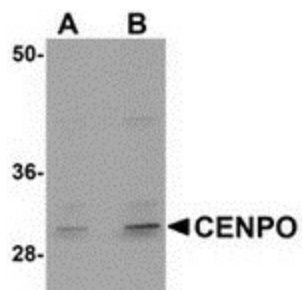
**Background:** Accurate chromosome segregation during mitosis requires a kinetochore to assemble correctly at the centromere of each chromatid and form a dynamic interface with the microtubules of the mitotic spindle. The kinetochore assembly includes the multisubunit CENP-H/I complex which can be divided into three functional classes based on phenotype analysis. One of these classes is referred to as the CENP-O class of proteins of which CENPO is the exemplar. These proteins form a stable complex with each other and are required for proper kinetochore function and for recovery from mitotic spindle damage. CENPO has also been shown to be an auto-antigen in a small population of anti-centromere antibodies- (ACA-) positive patients with scleroderma.



[View online »](#)

Synonyms: CENP-O; ICEN-36; MCM21R

### Product images:



Western blot analysis of CENPO in mouse kidney tissue lysate with CENPO antibody at (A) 1 and (B) 2 ug/ml.