

Product datasheet for **TA306851**

TMEM16A (ANO1) Rabbit Polyclonal Antibody

Product data:

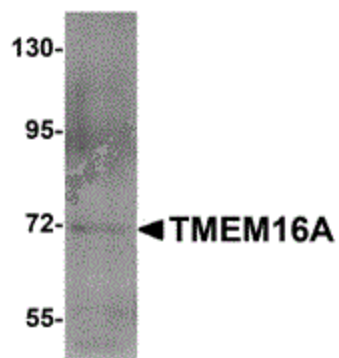
Product Type:	Primary Antibodies
Applications:	WB
Recommended Dilution:	WB: 1 ug/mL
Reactivity:	Human, Mouse
Host:	Rabbit
Isotype:	IgG
Clonality:	Polyclonal
Immunogen:	TMEM16A antibody was raised against a 17 amino acid peptide from near the amino terminus of human TMEM16A.
Formulation:	PBS containing 0.02% sodium azide.
Purification:	Affinity chromatography purified via peptide column
Conjugation:	Unconjugated
Storage:	Store at -20°C as received.
Stability:	Stable for 12 months from date of receipt.
Gene Name:	anoctamin 1
Database Link:	NP_060513 Entrez Gene 101772 Mouse Entrez Gene 55107 Human Q5XXA6
Background:	Calcium-activated chloride channels (CaCC) are present in many cell types and mediate physiological functions such as epithelial secretion, sensory signal transduction, and smooth muscle contraction. Subunits of these CaCC's include the transmembrane proteins TMEM16A and TMEM16B. TMEM16A is expressed in epithelial cells of the kidney and lung, pancreas, and sensory neurons and its mRNA is seen in foregut, airway epithelia, and tracheal smooth muscle; mice lacking TMEM16A fail to survive past ten days and show aerophagia and little weight gain. TMEM16A is also overexpressed or amplified in multiple cancers associated with poor survival such as oral cancers and gastrointestinal stromal tumors, suggesting the development of CaCC modulators may be a viable therapeutic strategy.
Synonyms:	DOG1; ORAOV2; TAOS2; TMEM16A



[View online »](#)

Protein Families: Transmembrane

Product images:



Western blot analysis of TMEM16A in A549 cell lysate with TMEM16A antibody at 1 ug/ml.