

## Product datasheet for **TA306850**

### INSM2 Rabbit Polyclonal Antibody

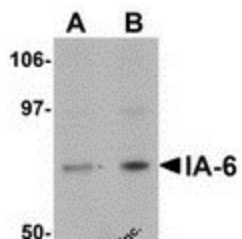
#### Product data:

Product Type:	Primary Antibodies
Applications:	WB
Recommended Dilution:	WB: 1 - 2 ug/mL
Reactivity:	Human, Mouse, Rat
Host:	Rabbit
Isotype:	IgG
Clonality:	Polyclonal
Immunogen:	IA-6 antibody was raised against a 14 amino acid peptide from near the carboxy terminus of human IA-6.
Formulation:	PBS containing 0.02% sodium azide.
Concentration:	1ug/ul
Purification:	Affinity chromatography purified via peptide column
Conjugation:	Unconjugated
Storage:	Store at -20°C as received.
Stability:	Stable for 12 months from date of receipt.
Gene Name:	INSM transcriptional repressor 2
Database Link:	<a href="#">AAI30380</a> <a href="#">Entrez Gene 84684 Human</a> <a href="#">Q96T92</a>
Background:	IA-6, also known as insulinoma-associated 2 or INSM2, is related to IA-1 (INSM1), a zinc-finger factor that is expressed in the developing nervous system. While the exact function of IA-6 is not known, other related insulinoma-associated proteins such as IA-2 are major autoantigens in type 1 diabetes. The homology exhibited by IA-6 to IA-1 has led to speculation that IA-6 may also play a role in the regulation of gene transcription.
Synonyms:	IA-6; IA6; mlt1



[View online »](#)

## Product images:



Western blot analysis of IA-6 in rat thymus tissue lysate with IA-6 antibody at (A) 1 and (B) 2 ug/ml.