

## Product datasheet for **TA306846**

### RWDD3 Rabbit Polyclonal Antibody

#### Product data:

Product Type:	Primary Antibodies
Applications:	WB
Recommended Dilution:	WB: 1 ug/mL
Reactivity:	Human, Mouse, Rat
Host:	Rabbit
Isotype:	IgG
Clonality:	Polyclonal
Immunogen:	RWDD3 antibody was raised against a 15 amino acid peptide from near the carboxy terminus of human RWDD3.
Formulation:	PBS containing 0.02% sodium azide.
Concentration:	1ug/ul
Purification:	Affinity chromatography purified via peptide column
Conjugation:	Unconjugated
Storage:	Store at -20°C as received.
Stability:	Stable for 12 months from date of receipt.
Gene Name:	RWD domain containing 3
Database Link:	<a href="#">NP_056300</a> <a href="#">Entrez Gene 25950 Human</a> <a href="#">Q9Y3V2</a>

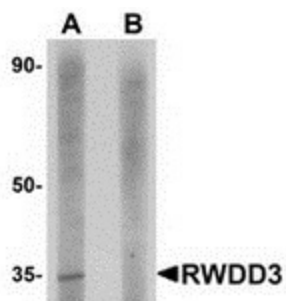
**Background:** RWDD3 (RSUME), a small RWD-containing protein, has a central role in sumoylation by enhancing SUMO conjugation in the regulatory network of immune-inflammatory signals. RWDD3 increases Ikbeta sumoylation and stability. In addition, RWDD3 inhibits TNF-alpha-induced kB-LUC (Luciferase) reporter activity, showing the functional consequence of Ikbeta increased stability. RSUME-enhanced sumoylation of Ikbeta leads to the inhibition of NF-kbeta activity on two well-known inflammatory genes, IL-8 and cyclooxygenase-2 (Cox-2) and therefore may also favor anti-inflammatory pathways. Expression of RWDD3 was induced under hypoxic conditions and it has a potential role during vascularization. Both BMP-4 and RWDD3 may be interesting targets for inhibiting steps involved in pituitary tumorigenesis.



[View online »](#)

Synonyms: RSUME

### Product images:



Western blot analysis of RWDD3 in rat kidney tissue lysate with RWDD3 antibody at 1 ug/ml in (A) the absence and (B) the presence of blocking peptide.