

Product datasheet for **TA306841**

PROSAPIP1 (LZTS3) Rabbit Polyclonal Antibody

Product data:

Product Type:	Primary Antibodies
Applications:	IF, IHC, WB
Recommended Dilution:	WB: 1 ug/mL, ICC: 2.5 ug/mL, IF: 20 ug/mL
Reactivity:	Human, Mouse, Rat
Host:	Rabbit
Isotype:	IgG
Clonality:	Polyclonal
Immunogen:	Prosapip1 antibody was raised against a 16 amino acid peptide from near the carboxy terminus of human Prosapip1.
Formulation:	PBS containing 0.02% sodium azide.
Concentration:	1ug/ul
Purification:	Affinity chromatography purified via peptide column
Conjugation:	Unconjugated
Storage:	Store at -20°C as received.
Stability:	Stable for 12 months from date of receipt.
Gene Name:	leucine zipper tumor suppressor family member 3
Database Link:	NP_055546 Entrez Gene 241638 Mouse Entrez Gene 280670 Rat Entrez Gene 9762 Human O60299

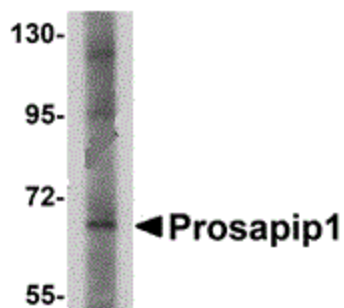
Background: Prosapip1 is a binding partner of the postsynaptic density (PSD) protein ProSAP2/Shank3, a major scaffolding protein in excitatory brain synapses. Prosapip1 is thought to bind ProSAP2/Shank3 through ProSAP2/Shank3's PDZ domain and link it in turn to the Spine-associated Rap-Gap (SPAR). Prosapip1 shares significant homology with another PSD protein, PSD-Zip70, with both coding for a Fez1 domain that can be found in a total of four related protein, forming a novel family of scaffolding molecules termed 'Fezzins'. Recent studies show that Prosapip1 can be found in endocrine cells in which it is localized primarily in the hormone-storing compartment of these cells, suggesting that Prosapip1 may have other functions in non-neuronal cells.



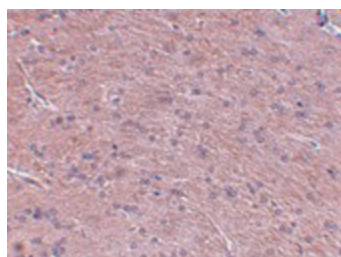
[View online »](#)

Synonyms: PROSAPIP1; RP5-1187M17.10

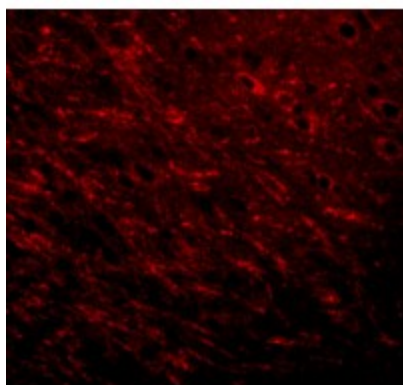
Product images:



Western blot analysis of Prosapip1 in SK-N-SH cell lysate with Prosapip1 antibody at 1 ug/ml.



Immunohistochemistry of Prosapip1 in rat brain tissue with Prosapip1 antibody at 2.5 ug/ml.



Immunofluorescence of Prosapip 1 in rat brain tissue with Prosapip 1 antibody at 20 ug/mL.