

Product datasheet for **TA306839**

Angiotensin II Type 1 Receptor (AGTR1) Rabbit Polyclonal Antibody

Product data:

Product Type:	Primary Antibodies
Applications:	IF, IHC, WB
Recommended Dilution:	WB: 1 - 2 ug/mL, ICC: 2.5 ug/mL, IF: 20 ug/mL
Reactivity:	Human, Mouse, Rat
Host:	Rabbit
Isotype:	IgG
Clonality:	Polyclonal
Immunogen:	AGTR1 antibody was raised against a 16 amino acid peptide from near the center of human AGTR1.
Formulation:	PBS containing 0.02% sodium azide.
Purification:	Affinity chromatography purified via peptide column
Conjugation:	Unconjugated
Storage:	Store at -20°C as received.
Stability:	Stable for 12 months from date of receipt.
Gene Name:	angiotensin II receptor type 1
Database Link:	NP_000676 Entrez Gene 185 Human P30556

Background: Angiotensin II is a potent vasopressor hormone and a primary regulator of aldosterone secretion that acts through at least two types of receptors, AGTR1 and AGTR2. It is an important effector controlling blood pressure and volume in the cardiovascular system and plays a major role in the development of the mammalian kidney and urinary tract. AGTR1, the type 1 receptor, is thought to mediate the major cardiovascular effects of angiotensin II and may play a role in the generation of reperfusion arrhythmias following restoration of blood flow to ischemic or infarcted myocardium. AGTR1 has recently been found to regulate the differentiation of bone marrow-derived monocyte lineage progenitors from hematopoietic stem cells, indicating the diversity of the roles of AGTR1.

Synonyms: AG2S; AGTR1B; AT1; AT1AR; AT1B; AT1BR; AT1R; AT2R1; HAT1R

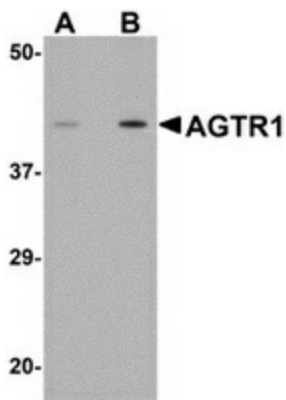


[View online »](#)

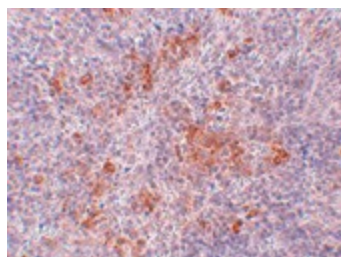
Protein Families: Druggable Genome, GPCR, Transmembrane

Protein Pathways: Calcium signaling pathway, Neuroactive ligand-receptor interaction, Renin-angiotensin system, Vascular smooth muscle contraction

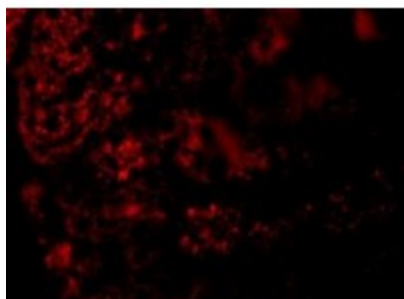
Product images:



Western blot analysis of AGTR1 in mouse kidney tissue lysate with AGTR1 antibody at (A) 1 and (B) 2 ug/ml.



Immunohistochemistry of AGTR1 in mouse kidney tissue with AGTR1 antibody at 2.5 ug/ml.



Immunofluorescence of AGTR1 in Mouse Kidney cells with AGTR1 antibody at 20 ug/mL.