

## Product datasheet for **TA306837**

### PP14397 (JMJD8) Rabbit Polyclonal Antibody

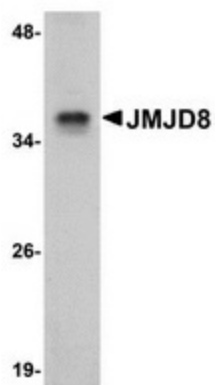
#### Product data:

Product Type:	Primary Antibodies
Applications:	IF, IHC, WB
Recommended Dilution:	WB: 1 ug/mL, ICC: 2.5 ug/mL, IF: 20 ug/mL
Reactivity:	Human, Mouse, Rat
Host:	Rabbit
Isotype:	IgG
Clonality:	Polyclonal
Immunogen:	JMJD8 antibody was raised against an 18 amino acid peptide from near the carboxy terminus of human JMJD8.
Formulation:	PBS containing 0.02% sodium azide.
Purification:	Affinity chromatography purified via peptide column
Conjugation:	Unconjugated
Storage:	Store at -20°C as received.
Stability:	Stable for 12 months from date of receipt.
Gene Name:	jumonji domain containing 8
Database Link:	<a href="#">NP_001005920</a> <a href="#">Entrez Gene 72106</a> <a href="#">MouseEntrez Gene 360498</a> <a href="#">RatEntrez Gene 339123</a> <a href="#">Human Q96S16</a>
Background:	The jumonji domain-containing protein (JMJD) family is defined by the presence of the JmjC domain that is observed in several diverse species. While several JMJD proteins have been identified as being involved in chromatin regulation, histone demethylation and development, the function of JMJD8 has not been identified.
Synonyms:	C16orf20; PP14397

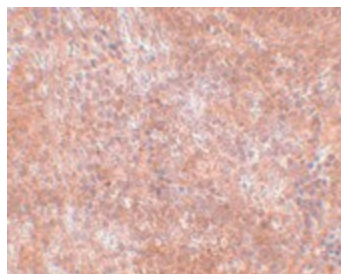


[View online »](#)

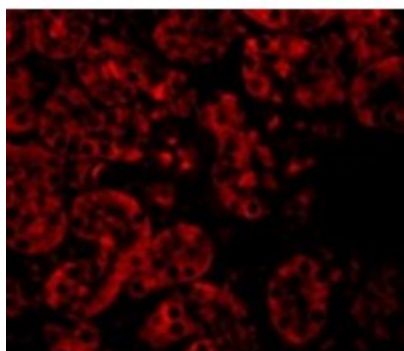
## Product images:



Western blot analysis of JMJD8 in rat kidney tissue lysate with JMJD8 antibody at 1 ug/ml.



Immunohistochemistry of JMJD8 in mouse spleen tissue with JMJD8 antibody at 2.5 ug/ml.



Immunofluorescence of JMJD8 in Mouse Kidney cells with JMJD8 antibody at 20 ug/mL.