

## Product datasheet for **TA306836**

### JMJD7 Rabbit Polyclonal Antibody

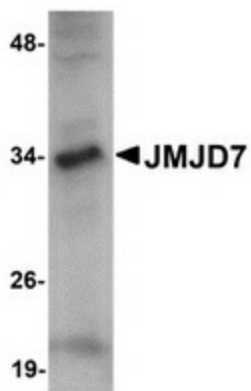
#### Product data:

Product Type:	Primary Antibodies
Applications:	IF, IHC, WB
Recommended Dilution:	WB: 1 ug/mL, ICC: 2.5 ug/mL, IF: 20 ug/mL
Reactivity:	Human, Mouse, Rat
Host:	Rabbit
Isotype:	IgG
Clonality:	Polyclonal
Immunogen:	JMJD7 antibody was raised against an 18 amino acid peptide from near the carboxy terminus of human JMJD7.
Formulation:	PBS containing 0.02% sodium azide.
Concentration:	1ug/ul
Purification:	Affinity chromatography purified via peptide column
Conjugation:	Unconjugated
Storage:	Store at -20°C as received.
Stability:	Stable for 12 months from date of receipt.
Gene Name:	jumonji domain containing 7
Database Link:	<a href="#">NP_001108104</a> <a href="#">Entrez Gene 433466 Mouse</a> <a href="#">Entrez Gene 100137086 Rat</a> <a href="#">Entrez Gene 100137047 Human</a> <a href="#">POC870</a>
Background:	The jumonji domain-containing protein (JMJD) family is defined by the presence of the JmjC domain that is observed in several diverse species. While several JMJD proteins have been identified as being involved in chromatin regulation, histone demethylation and development, the function of JMJD7 has not been identified. JMJD7 was initially thought to be a novel splice form of the phospholipase PLA2G4B which is located downstream of JMJD7 as most tissues express a read-through transcript of the two genes.
Synonyms:	FLJ20543; FLJ20656; FLJ20807; FLJ77014; FLJ78330

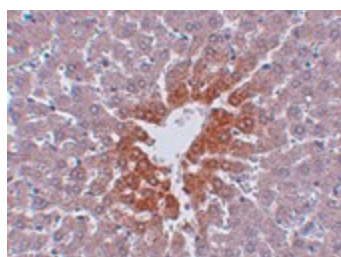


[View online »](#)

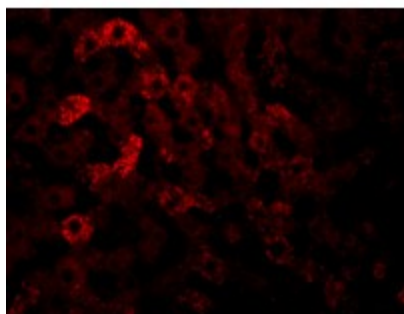
## Product images:



Western blot analysis of JMJD7 in 3T3 cell lysate with JMJD7 antibody at 1 ug/ml.



Immunohistochemistry of JMJD7 in rat liver tissue with JMJD7 antibody at 2.5 ug/ml.



Immunofluorescence of JMJD7 in rat liver tissue with JMJD7 antibody at 20 ug/mL.