

## Product datasheet for **TA306835**

### JMJD6 Rabbit Polyclonal Antibody

#### Product data:

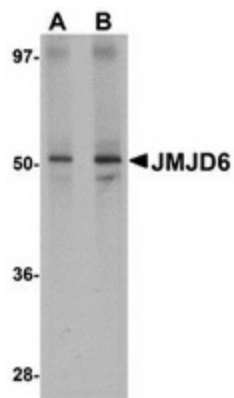
Product Type:	Primary Antibodies
Applications:	IF, IHC, WB
Recommended Dilution:	WB: 1 - 2 ug/mL, ICC: 2.5 ug/mL, IF: 20 ug/mL
Reactivity:	Human, Mouse, Rat
Host:	Rabbit
Isotype:	IgG
Clonality:	Polyclonal
Immunogen:	JMJD6 antibody was raised against a 15 amino acid peptide from near the amino terminus of human JMJD6.
Formulation:	PBS containing 0.02% sodium azide.
Purification:	Affinity chromatography purified via peptide column
Conjugation:	Unconjugated
Storage:	Store at -20°C as received.
Stability:	Stable for 12 months from date of receipt.
Gene Name:	arginine demethylase and lysine hydroxylase
Database Link:	<a href="#">NP_001074930</a> <a href="#">Entrez Gene 107817 MouseEntrez Gene 360665 RatEntrez Gene 23210 Human Q6NYC1</a>
Background:	The jumonji domain-containing protein (JMJD) family is defined by the presence of the JmjC domain that is observed in several diverse species. JMJD6 was initially identified as a membrane protein that participates in phagocytosis but recent studies have shown that it has other functions when it is expressed in the cytosol and nucleus. JMJD6 is thought to play important roles in regulation of development and differentiation as knockdown experiments in mice resulted in neonatal lethality with severe defects in the morphology of numerous organs. JMJD6 also can catalyze the lysyl-hydroxylation of U2AF65, a protein involved with RNA splicing, suggesting that some of the functions attributed to JMJD6 may be due to its regulatory activity of RNA splicing.
Synonyms:	PSR; PTDSR; PTDSR1



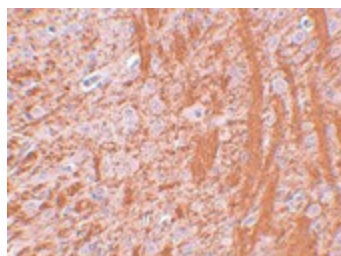
[View online »](#)

Protein Families: Druggable Genome, ES Cell Differentiation/IPS

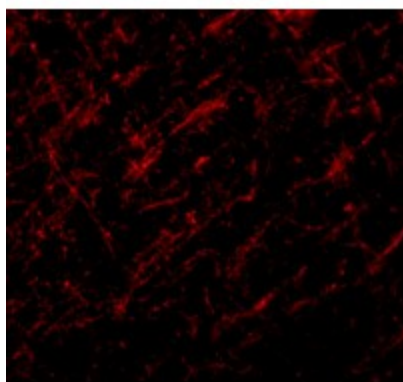
### Product images:



Western blot analysis of JMJD6 in human brain tissue lysate with JMJD6 antibody at (A) 1 and (B) 2 ug/ml.



Immunohistochemistry of JMJD6 in rat brain tissue with JMJD6 antibody at 2.5 ug/ml.



Immunofluorescence of JMJD6 in rat brain tissue with JMJD6 antibody at 20 ug/mL.