

Product datasheet for **TA306834**

JMJD5 (KDM8) Rabbit Polyclonal Antibody

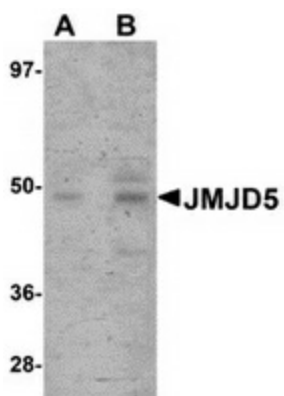
Product data:

Product Type:	Primary Antibodies
Applications:	IF, IHC, WB
Recommended Dilution:	WB: 1 - 2 ug/mL, ICC: 2.5 ug/mL, IF: 20 ug/mL
Reactivity:	Human, Mouse, Rat
Host:	Rabbit
Isotype:	IgG
Clonality:	Polyclonal
Immunogen:	JMJD5 antibody was raised against an 18 amino acid peptide from near the carboxy terminus of human JMJD5.
Formulation:	PBS containing 0.02% sodium azide.
Concentration:	1ug/ul
Purification:	Affinity chromatography purified via peptide column
Conjugation:	Unconjugated
Storage:	Store at -20°C as received.
Stability:	Stable for 12 months from date of receipt.
Gene Name:	lysine demethylase 8
Database Link:	NP_001138820 Entrez Gene 77035 Mouse Entrez Gene 308976 Rat Entrez Gene 79831 Human Q8N371
Background:	The jumonji domain-containing protein (JMJD) family is defined by the presence of the JmjC domain that is observed in several diverse species. While several JMJD proteins have been identified as being involved in chromatin regulation, histone demethylation and development, the function of JMJD5 has not been identified. JMJD5 is expressed in multiple tissues.
Synonyms:	JMJD5

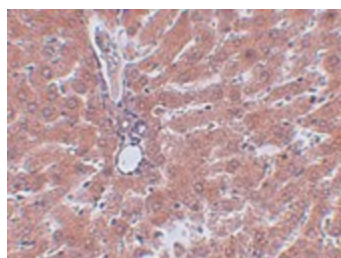


[View online »](#)

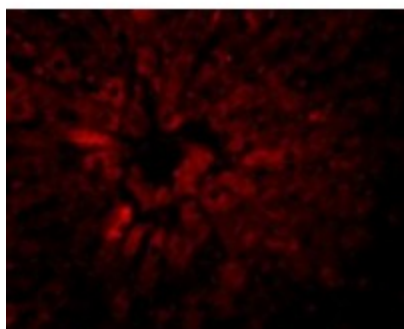
Product images:



Western blot analysis of JMJD5 in human liver tissue lysate with JMJD5 antibody at (A) 1 and (B) 2 ug/ml.



Immunohistochemistry of JMJD5 in rat liver tissue with JMJD5 antibody at 2.5 ug/ml.



Immunofluorescence of JMJD5 in Rat Liver cells with JMJD5 antibody at 20 ug/mL.