

Product datasheet for **TA306832**

KDM4B Rabbit Polyclonal Antibody

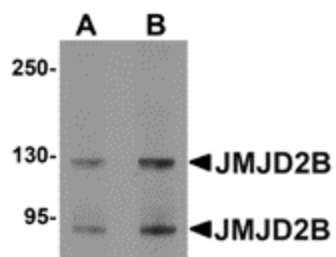
Product data:

| | |
|------------------------------|---|
| Product Type: | Primary Antibodies |
| Applications: | WB |
| Recommended Dilution: | WB: 1 - 2 ug/mL |
| Reactivity: | Human, Mouse, Rat |
| Host: | Rabbit |
| Isotype: | IgG |
| Clonality: | Polyclonal |
| Immunogen: | JMJD2B antibody was raised against a 16 amino acid peptide from near the center of human JMJD2B. |
| Formulation: | PBS containing 0.02% sodium azide. |
| Purification: | Affinity chromatography purified via peptide column |
| Conjugation: | Unconjugated |
| Storage: | Store at -20°C as received. |
| Stability: | Stable for 12 months from date of receipt. |
| Gene Name: | lysine demethylase 4B |
| Database Link: | NP_055830 Entrez Gene 193796 MouseEntrez Gene 301128 RatEntrez Gene 23030 Human O94953 |
| Background: | Members of the Jumonji domain 2 (JMJD2) family contain a JmjN domain, a JmjC domain, a JD2H domain, two TUDOR domains, and two PHD-type zinc fingers. Like other members of the JMJD1 and JMJD2 families, JMJD2B is a histone demethylase, but is reported to be a very poor enzyme. Similar to JMJD1A, JMJD2B is a transcriptional target of the hypoxia-inducible factor (HIF), and hypoxic cells express elevated levels of the JMJD2B mRNA and protein. Both JMJD1A and JMJD2B retain their histone demethylase activity in hypoxic conditions, suggesting that this activity of JMJD2B might play a role in the hypoxic gene expression program. |
| Synonyms: | JMJD2B; TDRD14B |
| Protein Families: | Druggable Genome |



[View online »](#)

Product images:



Western blot analysis of JMJD2B in A20 cell lysate with JMJD2B antibody at (A) 1 and (B) 2 ug/ml.