

Product datasheet for **TA306830**

JMJD1C Rabbit Polyclonal Antibody

Product data:

Product Type:	Primary Antibodies
Applications:	IF, IHC, WB
Recommended Dilution:	WB: 1 - 2 ug/mL, ICC: 2.5 ug/mL, IF: 20 ug/mL
Reactivity:	Human, Mouse, Rat
Host:	Rabbit
Isotype:	IgG
Clonality:	Polyclonal
Immunogen:	JMJD1C antibody was raised against a 20 amino acid peptide from near the amino terminus of human JMJD1C.
Formulation:	PBS containing 0.02% sodium azide.
Purification:	Affinity chromatography purified via peptide column
Conjugation:	Unconjugated
Storage:	Store at -20°C as received.
Stability:	Stable for 12 months from date of receipt.
Gene Name:	jumonji domain containing 1C
Database Link:	NP_116165 Entrez Gene 221037 Human Q15652

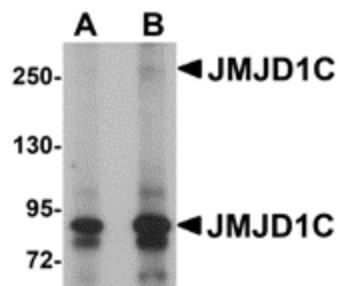
Background: The jumonji domain containing 1C protein (JMJD1C) was initially discovered in silico, and later suggested to be a candidate gene for autism. Like the related proteins JMJD1A and JMJD1B, JMJD1C is a histone H3K9 demethylase implicated in the nuclear hormone receptor-based transcriptional regulation. JMJD1C mRNA is highly expressed in undifferentiated embryonic stem (ES) cells as well as pancreatic islet, diffuse-type gastric cancer, and other tissues and tumors. The JMJD1C gene promoter contain bHLH-, AP-1-, and POU5F1-binding sites, and as preferential expression of POU5F1 has been reported in ES cells, pancreatic islet, and diffuse-type gastric cancer, it has been suggested that POU5F1-mediated expression of JMJD1C reactivates previously silenced genes in ES cells and diffuse-type gastric cancer. At least three isoforms of JMJD1C are known to exist. This antibody will not cross-react with JMJD1A or JMJD1B.



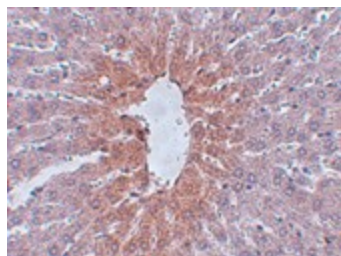
[View online »](#)

Synonyms: RP11-10C13.2; TRIP8

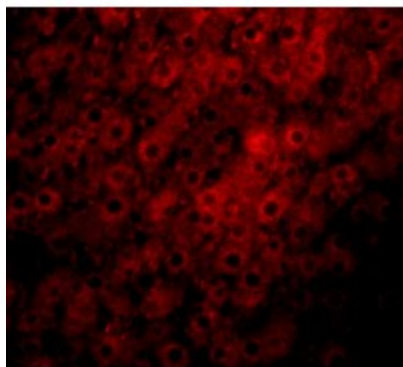
Product images:



Western blot analysis of JMJD1C in human liver tissue lysate with JMJD1C antibody at (A) 1 and (B) 2 ug/ml.



Immunohistochemistry of JMJD1C in rat liver tissue with JMJD1C antibody at 2.5 ug/ml.



Immunofluorescence of JMJD1C in rat liver tissue with JMJD1C antibody at 20 ug/mL.