

Product datasheet for **TA306829**

KDM3B Rabbit Polyclonal Antibody

Product data:

Product Type:	Primary Antibodies
Applications:	IF, IHC, WB
Recommended Dilution:	WB: 1 - 2 ug/mL, ICC: 2.5 ug/mL, IF: 20 ug/mL
Reactivity:	Human, Mouse, Rat
Host:	Rabbit
Isotype:	IgG
Clonality:	Polyclonal
Immunogen:	JMJD1B antibody was raised against a 20 amino acid peptide from near the center of human JMJD1B.
Formulation:	PBS containing 0.02% sodium azide.
Concentration:	1ug/ul
Purification:	Affinity chromatography purified via peptide column
Conjugation:	Unconjugated
Storage:	Store at -20°C as received.
Stability:	Stable for 12 months from date of receipt.
Gene Name:	lysine demethylase 3B
Database Link:	NP_057688 Entrez Gene 277250 Mouse Entrez Gene 682469 Rat Entrez Gene 51780 Human Q7LBC6



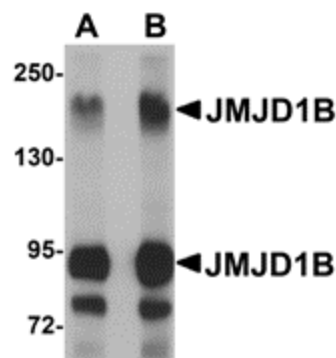
[View online »](#)

Background:

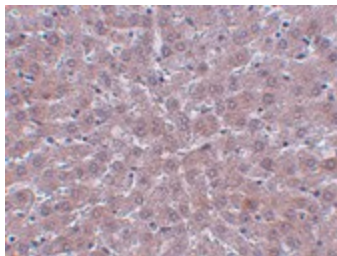
The jumonji domain containing 1B protein (JMJD1B) was originally discovered as a candidate for the myeloid leukemia tumor suppressor gene. Besides CD34+ cells and acute myeloid leukemia (AML) cell lines, JMJD1B mRNA is highly expressed in liver, heart, kidney, skeletal muscle, and placenta tissues. The JMJD1B gene is localized to a region of chromosome 5q31, which is frequently deleted in myeloid leukemias and myelodysplasias and expression of JMJD1B in a del(5q) cell line results in suppression of clonogenic growth suggesting that JMJD1B may function as a tumor suppressor. In contrast, JMJD1B gene copy number and mRNA expression level was increased in several non-small cell lung cancers indicating that the role of JMJD1B in cancer formation and progression is more complex than originally postulated. At least three isoforms of JMJD1B are known to exist. This antibody will not cross-react with JMJD1A or JMJD1C.

Synonyms:

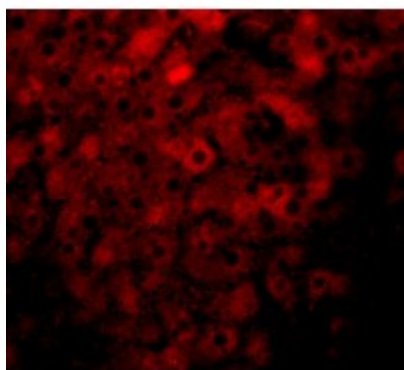
5qNCA; C5orf7; JMJD1B; NET22

Product images:

Western blot analysis of JMJD1B in rat liver tissue lysate with JMJD1B antibody at (A) 1 and (B) 2 ug/ml.



Immunohistochemistry of JMJD1B in rat liver tissue with JMJD1B antibody at 2.5 ug/ml.



Immunofluorescence of JMJD1B in rat liver tissue with JMJD1B antibody at 20 ug/mL.