

Product datasheet for **TA306828**

KDM3A / JHDM2A (KDM3A) Rabbit Polyclonal Antibody

Product data:

Product Type:	Primary Antibodies
Applications:	IF, IHC, WB
Recommended Dilution:	WB: 1 - 2 ug/mL, ICC: 5 ug/mL, IF: 20 ug/mL
Reactivity:	Human, Mouse, Rat
Host:	Rabbit
Isotype:	IgG
Clonality:	Polyclonal
Immunogen:	JMJD1A antibody was raised against a 16 amino acid peptide from near the amino terminus of human JMJD1A.
Formulation:	PBS containing 0.02% sodium azide.
Concentration:	1ug/ul
Purification:	Affinity chromatography purified via peptide column
Conjugation:	Unconjugated
Storage:	Store at -20°C as received.
Stability:	Stable for 12 months from date of receipt.
Gene Name:	lysine demethylase 3A
Database Link:	NP_060903 Entrez Gene 55818 Human Q9Y4C1



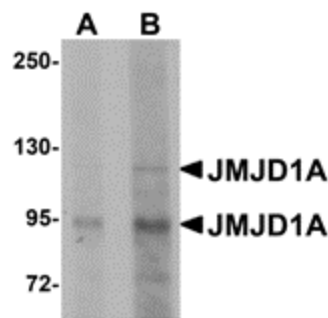
[View online »](#)

Background:

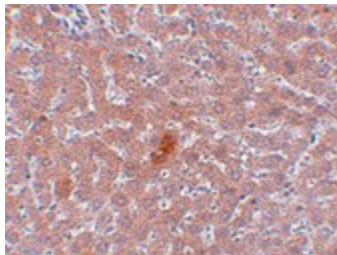
The jumonji domain containing 1A protein (JMJD1A) was originally discovered as a testes specific gene, but has been found to be expressed in numerous tissues. JMJD1A is a histone demethylase and specifically demethylates mono- and dimethyl-H3K9. It has also been found to be a novel interaction partner with ER71, a transcription factor expressed in the testes of adult mice and during embryogenesis. JMJD1A is also a downstream gene of STAT3, a protein that has been found to be important in the maintenance of mouse embryonic stem (mES) cells, and decreased JMJD1A expression correlated with the differentiation of cultured mES cells following the removal of the cytokine LIF. These findings suggest that JMJD1A might be a critical signaling molecule underlying the maintenance of pluripotency in embryonic stem cells. At least two isoforms of JMJD1A are known to exist. This antibody will not cross-react with JMJD1B or JMJD1C.

Synonyms:

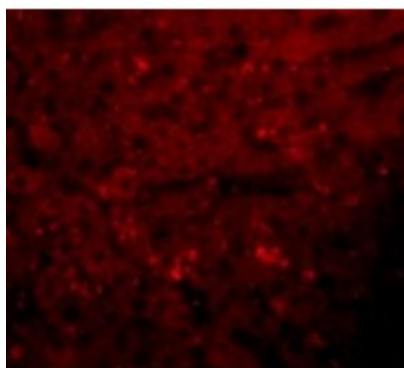
JHDM2A; JHMD2A; JMJD1; JMJD1A; TSGA

Product images:

Western blot analysis of JMJD1A in mouse liver tissue lysate with JMJD1A antibody at (A) 1 and (B) 2 ug/ml.



Immunohistochemistry of JMJD1A in rat liver tissue with JMJD1A antibody at 5 ug/ml.



Immunofluorescence of JMJD1A in Rat Liver cells with JMJD1A antibody at 20 ug/mL.