

Product datasheet for **TA306822**

TMEM214 Rabbit Polyclonal Antibody

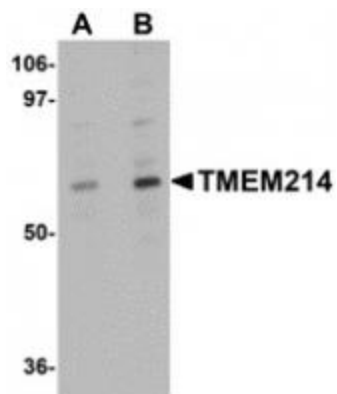
Product data:

Product Type:	Primary Antibodies
Applications:	IF, WB
Recommended Dilution:	WB: 1 - 2 ug/mL, ICC: 5 ug/mL, IF: 20 ug/mL
Reactivity:	Human, Mouse, Rat
Host:	Rabbit
Isotype:	IgG
Clonality:	Polyclonal
Immunogen:	TMEM214 antibody was raised against a 17 amino acid peptide near the amino terminus of human TMEM214.
Formulation:	PBS containing 0.02% sodium azide.
Concentration:	1ug/ul
Purification:	Affinity chromatography purified via peptide column
Conjugation:	Unconjugated
Storage:	Store at -20°C as received.
Stability:	Stable for 12 months from date of receipt.
Gene Name:	transmembrane protein 214
Database Link:	NP_060197 Entrez Gene 54867 Human Q6NUQ4
Background:	Transmembrane protein 214 (TMEM214) is a 77kD membrane protein which is widely expressed at high level. The gene encoding this protein maps to chromosome 2, at 2p23.3 TMEM214 interacts with LSM1, an SM-like protein, forming a stable heteromer present in tri-snRNP particles, which are important for pre-mRNA splicing. The detailed function of TMEM214 is still unknown, but a recent study showed that TMEM214 may be used to explore the contribution of human host factors of some infectious diseases such as Dengue fever, West Nile fever and yellow fever. Multiple isoforms of TMEM214 are known to exist.
Synonyms:	FLJ20254; FLJ39682

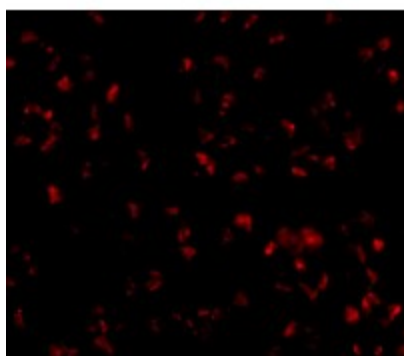


[View online »](#)

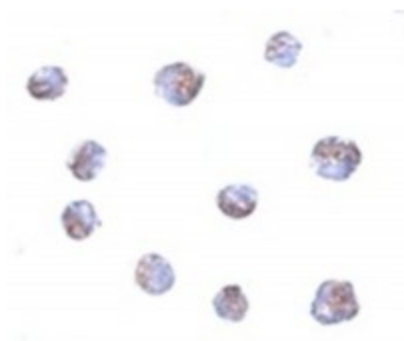
Product images:



Western blot analysis of TMEM214 in A20 cell lysate with TMEM214 antibody at (A) 1 and (B) 2 ug/mL.



Immunofluorescence of TMEM214 in A20 cells with TMEM214 antibody at 20 ug/mL.



Immunocytochemistry of TMEM214 in A20 cells with TMEM214 antibody at 5 ug/mL.