

Product datasheet for **TA306821**

IRGC Rabbit Polyclonal Antibody

Product data:

Product Type:	Primary Antibodies
Applications:	IF, WB
Recommended Dilution:	WB: 1 - 2 ug/mL, IF: 20 ug/mL
Reactivity:	Human, Mouse, Rat
Host:	Rabbit
Isotype:	IgG
Clonality:	Polyclonal
Immunogen:	IRGC antibody was raised against a 12 amino acid peptide near the carboxy terminus of human IRGC.
Formulation:	PBS containing 0.02% sodium azide.
Concentration:	1ug/ul
Purification:	Affinity chromatography purified via peptide column
Conjugation:	Unconjugated
Storage:	Store at -20°C as received.
Stability:	Stable for 12 months from date of receipt.
Gene Name:	immunity related GTPase cinema
Database Link:	NP_062558 Entrez Gene 308428 Rat Entrez Gene 56269 Human Q6NXR0



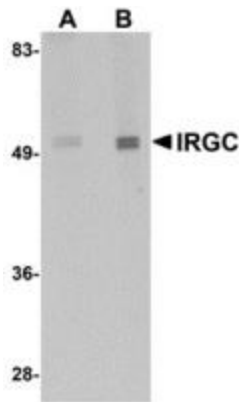
[View online »](#)

Background:

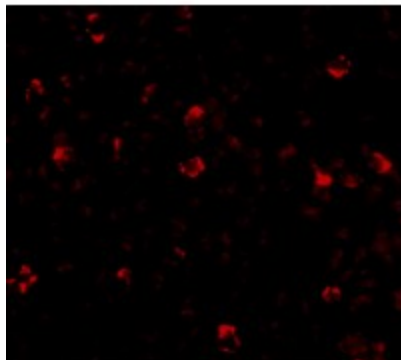
Immunity-related GTPases (IRG) (also known as p47 GTPases) are a family of GTPase proteins found in vertebrates, which play critical roles in mediating innate resistance to intracellular pathogens. IRG genes have been found in a number of mammals and lower species including mice, rats, zebrafish and humans. Most of the mouse genes contain interferon-stimulated response elements which mediate transcriptional activation by IFNs. In humans, only two IRG genes have been found: human IRGC encodes a full-length IRG protein that, like the mouse homologue, is constitutively expressed in testis, while human IRGM encodes a considerably truncated protein that is constitutively expressed in cultured cells including some macrophage cell lines. As the two human genes IRGC and IRGM are not subject to IFN control, it has been suggested that the host resistance mechanism supported by IRG proteins in the mouse is lacking in humans. Two isoforms of IRGC are known to exist; this antibody will recognize both isoforms.

Synonyms:

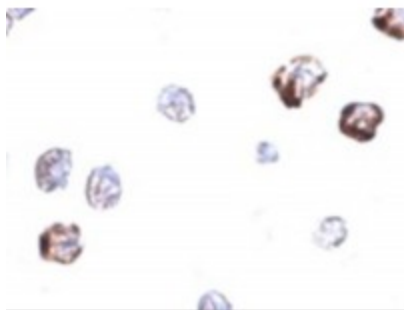
CINEMA; IFGGE; ligp5; IRGC1; R30953_1

Product images:


Western blot analysis of IRGC in mouse brain tissue lysate with IRGC antibody at (A) 1 and (B) 2 ug/mL.



Immunofluorescence of IRGCb in A20 cells with IRGCb antibody at 20 ug/mL.



Immunocytochemistry of IRGC in A20 cells with IRGC antibody at 2.5 ug/mL.