

Product datasheet for **TA306817**

SYPL1 Rabbit Polyclonal Antibody

Product data:

Product Type:	Primary Antibodies
Applications:	WB
Recommended Dilution:	WB: 1 ug/mL
Reactivity:	Human, Mouse, Rat
Host:	Rabbit
Isotype:	IgG
Clonality:	Polyclonal
Immunogen:	SYPL1 antibody was raised against a 16 amino acid peptide from near the amino terminus of human SYPL1.
Formulation:	PBS containing 0.02% sodium azide.
Concentration:	1ug/ul
Purification:	Affinity chromatography purified via peptide column
Conjugation:	Unconjugated
Storage:	Store at -20°C as received.
Stability:	Stable for 12 months from date of receipt.
Gene Name:	synaptophysin like 1
Database Link:	NP_006745 Entrez Gene 366595 Rat Entrez Gene 6856 Human Q16563



[View online »](#)

Background:

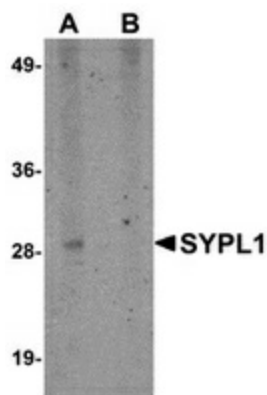
The synaptophysin-like protein 1, also known as pantophysin, is a homolog of the neuroendocrine-specific protein synaptophysin, with the highest level of homology across its four transmembrane domains. Unlike synaptophysin however, SYPL1 is ubiquitously expressed and found in small cytoplasmic transport vesicles regardless of their content. SYPL1 is thought to play a multifunctional role in vesicle biogenesis and transport and is a component of adipocyte transport vesicles, and thus may be involved in adipocyte secretion. SYPL1 also interacts with vesicle-associated membrane protein 2 (VAMP-2) in adipocytes and associates with GLUT4-containing vesicles. This antibody will not recognize synaptophysin or SYPL2. Two isoforms of SYPL1 are known to exist; this antibody will only recognize the longer isoform.

Synonyms:

H-SP1; SYPL

Protein Families:

Transmembrane

Product images:

Western blot analysis of SYPL1 in human brain tissue lysate with SYPL1 antibody at 1 ug/ml in (A) the absence and (B) the presence of blocking peptide.