

Product datasheet for **TA306808**

ARL15 Rabbit Polyclonal Antibody

Product data:

Product Type:	Primary Antibodies
Applications:	IHC, WB
Recommended Dilution:	WB: 1 ug/mL, ICC: 5 ug/mL
Reactivity:	Human, Mouse, Rat
Host:	Rabbit
Isotype:	IgG
Clonality:	Polyclonal
Immunogen:	ARL15 antibody was raised against a 17 amino acid peptide near the center of human ARL15.
Formulation:	PBS containing 0.02% sodium azide.
Concentration:	1ug/ul
Purification:	Affinity chromatography purified via peptide column
Conjugation:	Unconjugated
Storage:	Store at -20°C as received.
Stability:	Stable for 12 months from date of receipt.
Gene Name:	ADP ribosylation factor like GTPase 15
Database Link:	NP_061960 Entrez Gene 218639 Mouse Entrez Gene 689079 Rat Entrez Gene 54622 Human Q9NXU5



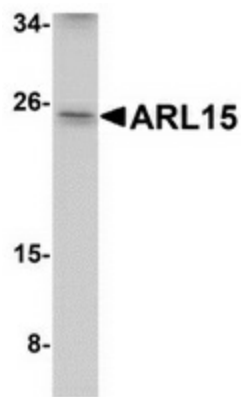
[View online »](#)

Background:

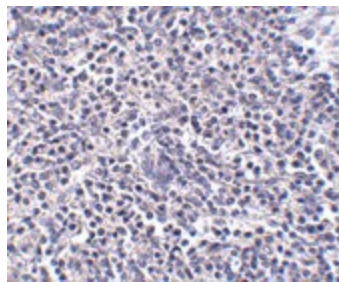
ADP-ribosylation factors (ARFs) are highly conserved guanine nucleotide binding proteins that enhance the ADP-ribosyltransferase activity of cholera toxin. ARFs are important in eukaryotic vesicular trafficking pathways and they play an essential role in the activation of phospholipase D (PC-PLD). ARL15 (ADP-ribosylation factor-like 15), is a member of the ARF family of the Ras superfamily of small GTPases that are known to be involved in multiple regulatory pathways altered in human carcinogenesis. Other members of this protein family include ARL11, thought to be a tumor suppressor and may play a role in the regulation of apoptosis, ARL2 which plays an important role in microtubule dynamics and cell cycle progression, and ARL4, which may play a role in neurogenesis during embryonic development. The gene encoding ARL15 maps to chromosome 5p15 in humans. At least three isoforms of ARL15 are known to exist.

Synonyms:

ARFRP2

Product images:

Western blot analysis of ARL15 in K562 cell lysate with ARL15 antibody at 1 ug/ml.



Immunohistochemistry of ARL15 in human spleen tissue with ARL15 antibody at 5 ug/ml.