

Product datasheet for **TA306804**

SYPL2 Rabbit Polyclonal Antibody

Product data:

Product Type:	Primary Antibodies
Applications:	IF, IHC, WB
Recommended Dilution:	WB: 1 ug/mL, ICC: 2.5 ug/mL, IF: 20 ug/mL
Reactivity:	Human, Mouse, Rat
Host:	Rabbit
Isotype:	IgG
Clonality:	Polyclonal
Immunogen:	SYPL2 antibody was raised against a 15 amino acid peptide near the carboxy terminus of human SYPL.
Formulation:	PBS containing 0.02% sodium azide.
Concentration:	1ug/ul
Purification:	Affinity chromatography purified via peptide column
Conjugation:	Unconjugated
Storage:	Store at -20°C as received.
Stability:	Stable for 12 months from date of receipt.
Gene Name:	synaptophysin like 2
Database Link:	NP_001035799 Entrez Gene 284612 Human Q5VXT5



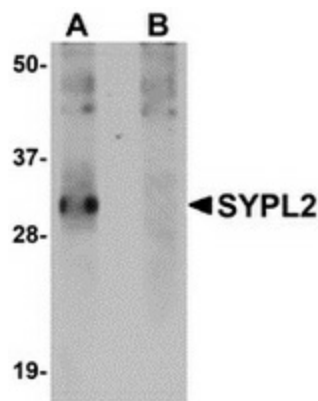
[View online »](#)

Background:

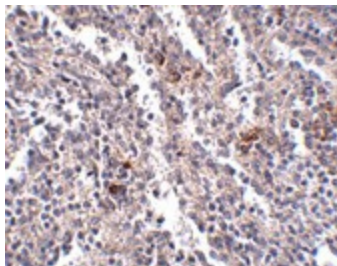
SYPL2, also known as Mitsugumin 29, was initially identified as a transmembrane protein from the triad junction in skeletal muscle that had significant homology with members of the synaptophysin family. SYPL2 is thought to participate in the excitation-contraction coupling process of skeletal muscle as SYPL2-null mice showed reduced muscle contractile force and altered triad junction structure and increased susceptibility to fatigue of the skeletal muscle. SYPL2 plays a critical role in muscle Ca²⁺ signaling by regulating the process of store-operated Ca²⁺ entry and interacts with ryanodine receptor (RyR), thereby influencing intracellular Ca²⁺ homeostasis through changes in the RyR/Ca²⁺ release function. Co-expression of SYPL2 and RyR in cultured cells leads to apoptotic cell death resulting from the depletion of Ca²⁺ from the intracellular stores. At least two isoforms of SYPL2 are known to exist. SYPL2 antibody will not cross-react with SYPL1.

Synonyms:

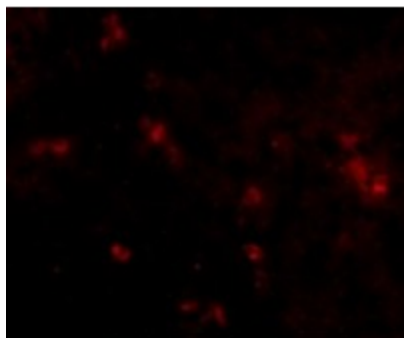
MG29; mitsugumin-29; mitsugumin 29; OTTHUMP00000012638; synaptophysin-like 2

Product images:

Western blot analysis of SYPL2 in human spleen tissue lysate with SYPL2 antibody at 1 ug/ml in (A) the absence and (B) the presence of blocking peptide.



Immunohistochemistry of SYPL2 in human spleen tissue with SYPL2 antibody at 2.5 ug/ml.



Immunofluorescence of SYPL2 in Human Spleen cells with SYPL2 antibody at 20 ug/mL.