

## Product datasheet for **TA306800**

### ZCRB1 Rabbit Polyclonal Antibody

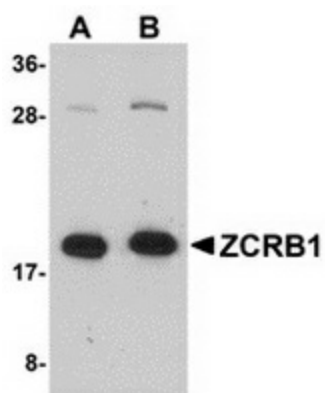
#### Product data:

Product Type:	Primary Antibodies
Applications:	WB
Recommended Dilution:	WB: 1 - 2 ug/mL
Reactivity:	Human, Mouse, Rat
Host:	Rabbit
Isotype:	IgG
Clonality:	Polyclonal
Immunogen:	ZCRB1 antibody was raised against a 17 amino acid peptide near the carboxy terminus of human ZCRB1.
Formulation:	PBS containing 0.02% sodium azide.
Concentration:	1ug/ul
Purification:	Affinity chromatography purified via peptide column
Conjugation:	Unconjugated
Storage:	Store at -20°C as received.
Stability:	Stable for 12 months from date of receipt.
Gene Name:	zinc finger CCHC-type and RNA binding motif containing 1
Database Link:	<a href="#">NP_149105</a> <a href="#">Entrez Gene 67197 Mouse</a> <a href="#">Entrez Gene 362990 Rat</a> <a href="#">Entrez Gene 85437 Human</a> <a href="#">Q8TBF4</a>
Background:	ZCRB1 is a nuclear protein first identified in a differential display screen involving morphine-dependence-related genes. Its expression is increased following morphine treatment and has been observed to be elevated in HepG2 cells. ZCRB1 contains a CCHC-type zinc finger RNA-binding motif and can interact with the DBA-binding domain of the stem cell regulator C/EBP transcription factors. ZCRB1 was identified as one of the protein components of U11/U12 snRNPs, which are components of U12-type spliceosome and function as a molecular bridge connecting both ends of the intron, suggesting ZCRB1 may play a key role in U12-type splicing.
Synonyms:	MADP-1; MADP1; RBM36; SNRNP31; ZCCHC19



[View online »](#)

## Product images:



Western blot analysis of ZCRB1 in Raji cell lysate with ZCRB1 antibody at (A) 1 and (B) 2 ug/ml.