

Product datasheet for **TA306799**

KLHL15 Rabbit Polyclonal Antibody

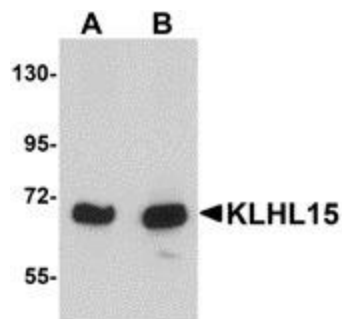
Product data:

Product Type:	Primary Antibodies
Applications:	IF, WB
Recommended Dilution:	WB: 1 - 2 ug/mL, ICC: 5 ug/mL, IF: 20 ug/mL
Reactivity:	Human, Mouse, Rat
Host:	Rabbit
Isotype:	IgG
Clonality:	Polyclonal
Immunogen:	KLHL15 antibody was raised against a 15 amino acid peptide near the carboxy terminus of human KLHL15.
Formulation:	PBS containing 0.02% sodium azide.
Concentration:	1ug/ul
Purification:	Affinity chromatography purified via peptide column
Conjugation:	Unconjugated
Storage:	Store at -20°C as received.
Stability:	Stable for 12 months from date of receipt.
Gene Name:	kelch like family member 15
Database Link:	NP_085127 Entrez Gene 236904 Mouse Entrez Gene 314111 Rat Entrez Gene 80311 Human Q96M94
Background:	KLHL15 is a member of a growing superfamily of kelch repeat-containing proteins. The kelch motif was discovered in the sequence of the Drosophila kelch ORF1 protein and forms a conserved beta-propeller tertiary structure. These kelch-like proteins have been implicated in embryogenesis and carcinogenesis through cytoskeleton organization. KLHL15 mRNA is widely expressed in many tissues and is thought to be involved in protein ubiquitination and cytoskeleton organization.
Synonyms:	HEL-S-305



[View online »](#)

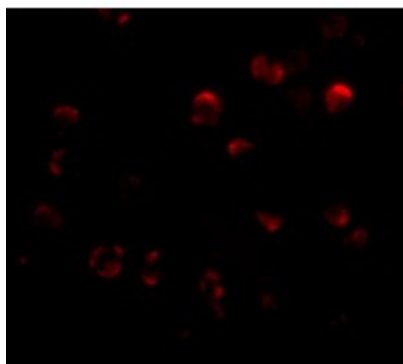
Product images:



Western blot analysis of KLHL15 in HeLa cell lysate with KLHL15 antibody at (A) 1 and (B) 2 ug/mL.



Immunocytochemistry of KLHL15 in HeLa cells with KLHL15 antibody at 5 ug/mL.



Immunofluorescence of KLHL15 in HeLa cells with KLHL15 antibody at 20 ug/mL.