

Product datasheet for **TA306796**

PPPDE1 (DESI2) Rabbit Polyclonal Antibody

Product data:

Product Type:	Primary Antibodies
Applications:	WB
Recommended Dilution:	WB: 1 - 2 ug/mL
Reactivity:	Human, Mouse, Rat
Host:	Rabbit
Isotype:	IgG
Clonality:	Polyclonal
Immunogen:	PNAS4 antibody was raised against a 19 amino acid peptide near the carboxy terminus of human PNAS4.
Formulation:	PBS containing 0.02% sodium azide.
Purification:	Affinity chromatography purified via peptide column
Conjugation:	Unconjugated
Storage:	Store at -20°C as received.
Stability:	Stable for 12 months from date of receipt.
Gene Name:	desumoylating isopeptidase 2
Database Link:	NP_057160 Entrez Gene 78825 MouseEntrez Gene 289277 RatEntrez Gene 51029 Human Q9BSY9

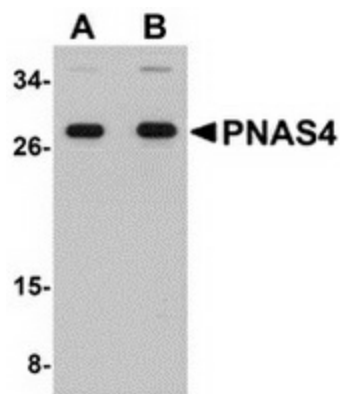
Background: PNAS4 is a highly conserved protein that shares high homology from plants to animals. It was initially identified as a putative apoptosis-related protein in the human acute promyelocytic leukemia cell line NB4. PNAS4 is activated during the early response to DNA damage and can inhibit proliferation via apoptosis when overexpressed in some tumor cells such as U2OS, SKOV3, and A549. PNAS4 inhibits tumor cell proliferation through the following mechanisms: (i) overexpression of PNAS4 causes S phase arrest by regulating the expression of cell cycle-related proteins and (ii) PNAS4 induces apoptosis through the mitochondrial apoptosis pathway. Recent evidence has shown that PNAS4 may be involved in the genesis of some cancers and could be a potential candidate for lung cancer therapy alone or in combination with gemcitabine. At least two isoforms of PNAS4 are known to exist.



[View online »](#)

Synonyms: C1orf121; CGI-146; DESI; DeSI-2; DESI1; FAM152A; PNAS-4; PPPDE1

Product images:



Western blot analysis of PNAS4 in EL4 cell lysate with PNAS4 antibody at (A) 1 and (B) 2 ug/ml.