

Product datasheet for **TA306795**

SHOC2 Rabbit Polyclonal Antibody

Product data:

Product Type:	Primary Antibodies
Applications:	IHC, WB
Recommended Dilution:	WB: 1 - 2 ug/mL, ICC: 5 ug/mL
Reactivity:	Human, Mouse, Rat
Host:	Rabbit
Isotype:	IgG
Clonality:	Polyclonal
Immunogen:	SHOC2 antibody was raised against a 21 amino acid synthetic peptide near the amino terminus of human SHOC2. The immunogen is located within amino acids 30 - 80 of SHOC2.
Formulation:	PBS containing 0.02% sodium azide.
Concentration:	1ug/ul
Purification:	Affinity chromatography purified via peptide column
Conjugation:	Unconjugated
Storage:	Store at -20°C as received.
Stability:	Stable for 12 months from date of receipt.
Gene Name:	SHOC2 leucine-rich repeat scaffold protein
Database Link:	NP_031399 Entrez Gene 56392 Mouse Entrez Gene 309548 Rat Entrez Gene 8036 Human Q9UQ13



[View online »](#)

Background:

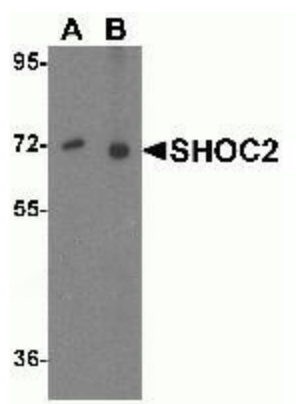
SHOC2 protein participates in protein binding / transferase activity in the fibroblast growth factor receptor signaling pathway and Ras protein signal transduction. It is a widely expressed protein composed almost entirely of leucine-rich repeats (LRR), with a lysine-rich sequence at the amino terminus and cytoplasmically localized. SHOC2 acts as a positive modulator of the RAS-MAPK signaling cascade, which is elicited by EGL-15 and LET-23 and mediated by LET-60. SHOC2 together with protein phosphatase 1c (PP1c) forms a highly specific M-Ras effector complex and is essential for activation of the MAPK pathway by growth factors. Furthermore, in tumor cells with Ras gene mutations, inhibition of SHOC2 expression inhibits MAPK, but not PI3K activity. The SHOC2-PP1c holoenzyme provides an attractive therapeutic target for inhibition of the MAPK pathway in cancer. Recent studies show that aberrantly acquired N-myristoylation of SHOC2 causes human disease Noonan-like syndrome with loose anagen hair.

Synonyms:

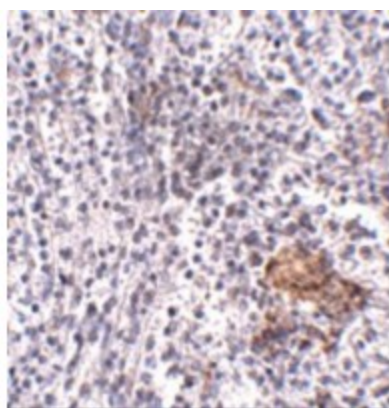
SIAA0862; SOC2; SUR8

Protein Families:

Druggable Genome

Product images:


Western blot analysis of SHOC2 in Jurkat cell lysate with SHOC2 antibody at (A) 1 and (B) 2 ug/mL.



Immunohistochemistry of SHOC2 in human spleen tissue with SHOC2 antibody at 5 ug/mL.