

Product datasheet for **TA306794**

EFEMP1 Rabbit Polyclonal Antibody

Product data:

Product Type:	Primary Antibodies
Applications:	IF, WB
Recommended Dilution:	WB: 0.5 - 1 ug/mL, ICC: 20 ug/mL, IF: 20 ug/mL
Reactivity:	Human, Mouse, Rat
Host:	Rabbit
Isotype:	IgG
Clonality:	Polyclonal
Immunogen:	Fibulin 3 antibody was raised against a 19 amino acid peptide near the carboxy terminus of human Fibulin 3.
Formulation:	PBS containing 0.02% sodium azide.
Concentration:	1ug/ul
Purification:	Affinity chromatography purified via peptide column
Conjugation:	Unconjugated
Storage:	Store at -20°C as received.
Stability:	Stable for 12 months from date of receipt.
Gene Name:	EGF containing fibulin like extracellular matrix protein 1
Database Link:	NP_001034437 Entrez Gene 216616 Mouse Entrez Gene 305604 Rat Entrez Gene 2202 Human Q12805



[View online »](#)

Background:

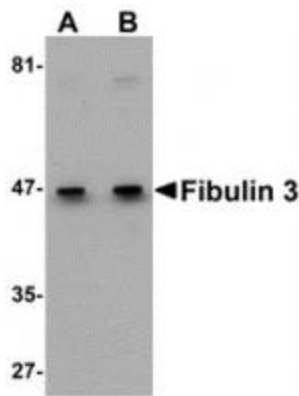
Fibulin 3, also known as epidermal growth factor (EGF)-containing fibulin-like extracellular matrix protein 1 (EFEMP1), is a member of the fibulin family of extracellular glycoproteins, a group of proteins that are widely distributed and frequently associated with vascular and elastic tissues. The fibulin proteins typically contain a tandem array of EGF-like repeats and a fibulin-type COOH-terminal module. Aberrant accumulation of Fibulin 3 in the endoplasmic reticulum of retinal pigment epithelial cells has been shown to be associated with inherited forms of macular degeneration, but the loss of Fibulin 3 expression does not lead to macular degeneration but rather the appearance of hernias due to a reduction of elastic fibers of fascial connective tissue. Recent experiments have shown that expression of Fibulin 3 promotes tumor growth and may thus be a therapeutic target. At least three isoforms of Fibulin 3 are known to exist. This antibody is predicted to not cross-react with other Fibulin proteins.

Synonyms:

DHRD; DRAD; FBLN3; FBNL; FIBL-3; MLVT; MTLV; S1-5

Protein Families:

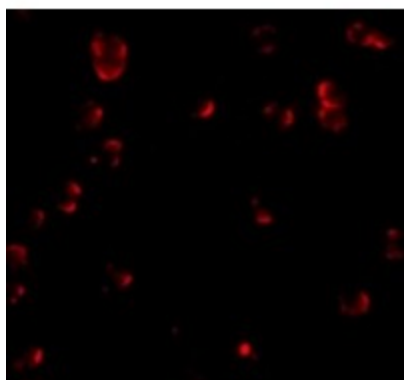
Secreted Protein

Product images:

Western blot analysis of Fibulin 3 in HeLa cell lysate with Fibulin 3 antibody at (A) 0.5 and (B) 1 ug/mL.



Immunocytochemistry of Fibulin 3 in HeLa cells with Fibulin 3 antibody at 20 ug/mL.



Immunofluorescence of Fibulin 3 in HeLa cells with Fibulin 3 antibody at 20 ug/mL.