

Product datasheet for **TA306792**

RGS21 Rabbit Polyclonal Antibody

Product data:

Product Type:	Primary Antibodies
Applications:	IF, WB
Recommended Dilution:	WB: 0.5 ug/mL, IF: 20 ug/mL
Reactivity:	Human
Host:	Rabbit
Isotype:	IgG
Clonality:	Polyclonal
Immunogen:	RGS21 antibody was raised against a 16 amino acid synthetic peptide near the center of human RGS21. The immunogen is located within amino acids 40 - 90 of RGS21.
Formulation:	PBS containing 0.02% sodium azide.
Concentration:	1ug/ul
Purification:	Affinity chromatography purified via peptide column
Conjugation:	Unconjugated
Storage:	Store at -20°C as received.
Stability:	Stable for 12 months from date of receipt.
Gene Name:	regulator of G-protein signaling 21
Database Link:	NP_001034241 Entrez Gene 431704 Human Q2M5E4

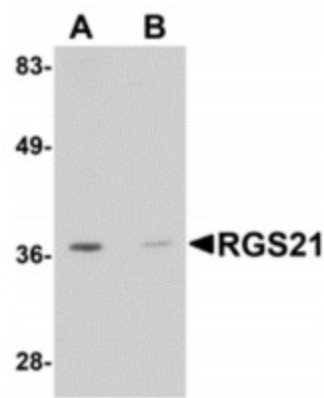
[View online »](#)

Background:

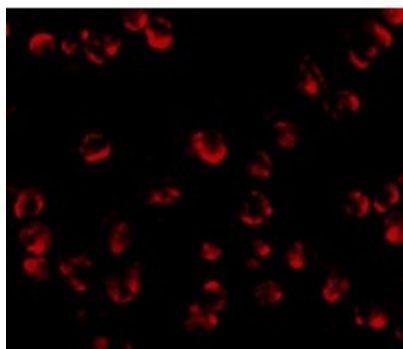
Regulator of G-protein signaling (RGS) proteins contain an 120 amino acid conserved domain, termed the RGS domain, that acts as a GTPase-activating protein that acts to reduce the signal transmitted by the receptor-activated G-alpha subunit. RGS21 is a recently identified member of this family that has been reported to be selectively expressed in subpopulations of taste bud cells and co-expressed with bitter and sweet transduction components such as alpha-gusticin, phospholipase Cbeta2, T1R2/T1R3 sweet taste receptors and T2R bitter taste receptors. Other reports indicate that RGS21 is more widely expressed. Binding assays demonstrate that RGS21 binds alpha-gusticin in a conformation-dependent manner and may do the same with T1R receptors, suggesting that RGS21 may play a role in sweet and bitter taste transduction processes.

Synonyms:

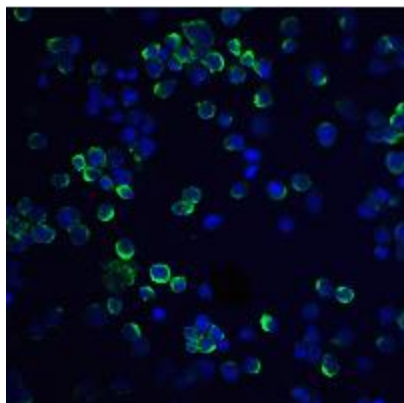
RGS21

Product images:


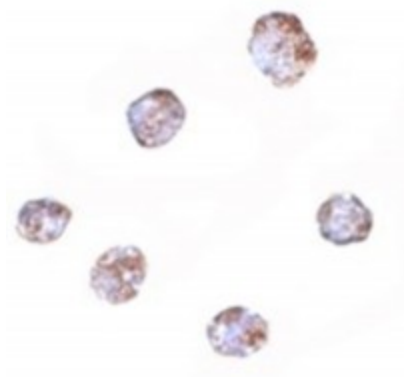
Western blot analysis of RGS21 in HepG2 cell lysate with RGS21 antibody at 0.5ug/ml in (A) the absence and (B) the presence of blocking peptide.



Immunofluorescence of RGS21 in HepG2 cells with RGS21 antibody at 20ug/ml.



Immunofluorescence of RGS21 in HepG2 cells with RGS21 antibody at 20ug/ml.



Immunocytochemistry of RGS21 in HepG2 cells with RGS21 antibody at 2.5ug/ml.