

Product datasheet for **TA306790**

MACC1 Rabbit Polyclonal Antibody

Product data:

Product Type:	Primary Antibodies
Applications:	IF, IHC, WB
Recommended Dilution:	WB: 1 - 2 ug/mL, ICC: 2.5 ug/mL, IF: 20 ug/mL
Reactivity:	Human, Mouse
Host:	Rabbit
Isotype:	IgG
Clonality:	Polyclonal
Immunogen:	MACC1 antibody was raised against a 17 amino acid synthetic peptide near the center of human MACC1. The immunogen is located within amino acids 430 - 480 of MACC1.
Formulation:	PBS containing 0.02% sodium azide.
Purification:	Affinity chromatography purified via peptide column
Conjugation:	Unconjugated
Storage:	Antibody can be stored at 4°C up to one year. Antibodies should not be exposed to prolonged high temperatures.
Stability:	Stable for 12 months from date of receipt.
Gene Name:	metastasis associated in colon cancer 1
Database Link:	NP_877439 Entrez Gene 238455 Mouse Entrez Gene 346389 Human Q6ZN28



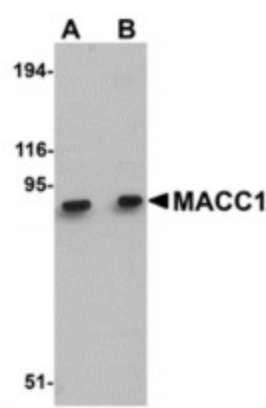
[View online »](#)

Background:

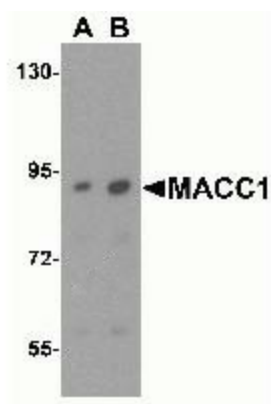
Metastasis associated in colon cancer 1 (MACC1) is a key regulator of the hepatocyte growth factor (HGF)-HGF receptor (MET) pathway, which is involved in cellular growth, epithelial-mesenchymal transition, angiogenesis, cell motility, invasiveness, and metastasis. MACC1 protein consists of four domains: ZU5, SH3, and two C-terminal death domains (DD). Expression of MACC1 was found significantly upregulated in malignant tissues (colon cancer of all stages as well as liver and lung metastases) compared to normal tissues or adenomas. MACC1 represents an early and crucial prognostic indicator for colon cancer metastasis that is independent of age, sex, tumor infiltration, nodal status, and lymph vessel invasion. Besides its involvement in signal transduction with the MET receptor, MACC1 also links MET signaling and apoptosis. MACC1 may also be an important therapeutic target for colorectal cancer treatment. At least two isoforms of MACC1 are known to exist.

Synonyms:

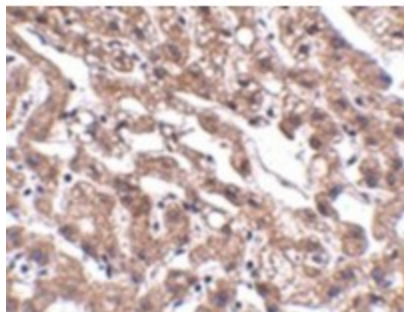
7A5; SH3BP4L

Product images:


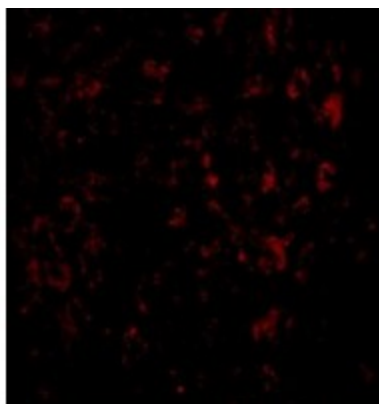
Western blot analysis of MACC1 in mouse liver tissue lysate with MACC1 antibody at (A) 1 and (B) 2ug/ml.



Western blot analysis of MACC1 expression in human liver tissue lysate with MACC1 antibody at (A) 1 and (B) 2ug/ml.



Immunohistochemistry of MACC1 in human liver tissue with MACC1 antibody at 2.5ug/ml.



Immunofluorescence of MACC1 in Human Liver cells with MACC1 antibody at 20ug/ml.