

Product datasheet for **TA306788**

SCARB1 Rabbit Polyclonal Antibody

Product data:

Product Type:	Primary Antibodies
Applications:	IF, IHC, WB
Recommended Dilution:	WB: 1 - 2 ug/mL, ICC: 2.5 ug/mL, IF: 20 ug/mL
Reactivity:	Human, Mouse, Rat
Host:	Rabbit
Isotype:	IgG
Clonality:	Polyclonal
Immunogen:	SCARB1 antibody was raised against a 15 amino acid peptide near the amino terminus of human SCARB1.
Formulation:	PBS containing 0.02% sodium azide.
Purification:	Affinity chromatography purified via peptide column
Conjugation:	Unconjugated
Storage:	Store at -20°C as received.
Stability:	Stable for 12 months from date of receipt.
Gene Name:	scavenger receptor class B member 1
Database Link:	NP_001076428 Entrez Gene 20778 Mouse Entrez Gene 25073 Rat Entrez Gene 949 Human Q8WTV0
Background:	Scavenger receptor class B member 1 (SCARB1), also known as SR-BI, is part of the scavenger receptor superfamily, which is composed of many members with diverse structures, expression patterns, and functions. SCARB1 is a multi-ligand cell-surface receptor that mediates the selective uptake of lipid from HDL cholesterol into cells and is expressed in steroidogenic tissues in adult animals. Other ligands of SCARB1 include native, acetylated, or oxidized LDL and anionic phospholipids. SCARB1-deficient mice have elevated HDL levels and increased susceptibility to atherosclerosis on fat feeding, indicating its importance in the regulation of cholesterol homeostasis. Along with CLDN1, LDL-R, and the tetraspanin superfamily member CD81, SCARB1 has been reported to be an entry factor for the Hepatitis C virus. At least two isoforms of SCARB1 are known to exist.

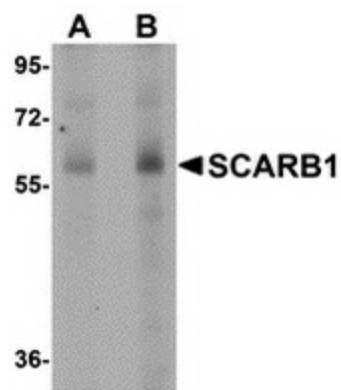


[View online »](#)

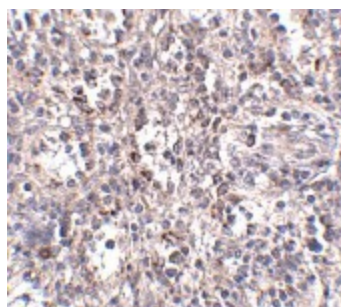
Synonyms: CD36L1; CLA-1; CLA1; HDLQTL6; SR-BI; SRB1

Protein Families: Druggable Genome, Transmembrane

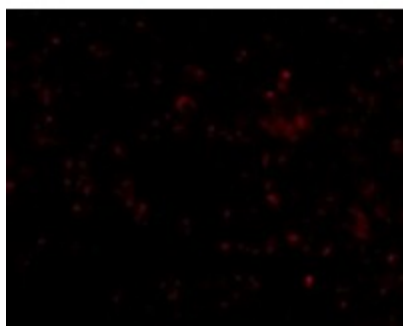
Product images:



Western blot analysis of SCARB1 in human spleen tissue lysate with SCARB1 antibody at (A) 1 and (B) 2 ug/ml.



Immunohistochemistry of SCARB1 in human spleen tissue with SCARB1 antibody at 2.5 ug/ml.



Immunofluorescence of SCARB1 in Human Spleen tissue with SCARB1 antibody at 20 ug/mL.