

Product datasheet for **TA306787**

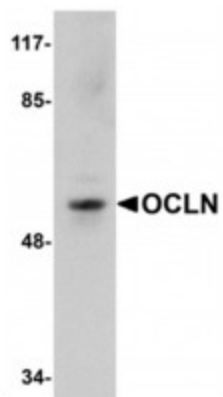
OCN Rabbit Polyclonal Antibody

Product data:

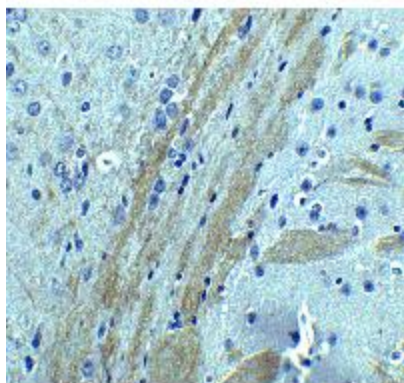
Product Type:	Primary Antibodies
Applications:	IF, IHC, WB
Recommended Dilution:	WB: 1 ug/mL, ICC: 2.5 ug/mL, IF: 20 ug/mL
Reactivity:	Human, Mouse, Rat
Host:	Rabbit
Isotype:	IgG
Clonality:	Polyclonal
Immunogen:	OCN antibody was raised against a 15 amino acid synthetic peptide from near the carboxy terminus of human OCN. The immunogen is located within the last 50 amino acids of OCN.
Formulation:	PBS containing 0.02% sodium azide.
Purification:	Affinity chromatography purified via peptide column
Conjugation:	Unconjugated
Storage:	Store at -20°C as received.
Stability:	Stable for 12 months from date of receipt.
Gene Name:	occludin
Database Link:	AAH29886 Q16625
Background:	Tight junctions act as a semi-permeable barrier to the transport of ions, solutes, and water and are considered to function as a fence that divides apical and basolateral domains of plasma membranes. Tight junctions coordinate a variety of signaling and trafficking molecules regulating cell differentiation, proliferation, and polarity and contain a number of junctional proteins including Occludin, Claudins, junctional adhesion molecules (JAMs), as well as multiple scaffold proteins. Occludin, the first identified component of tight junction strands, is thought function as a signal transmitter in multiple signaling pathways and can associate with multiple kinases and phosphatases such as PI3-kinase and protein phosphatases 1 and 2A. At least two isoforms of OCN are known to exist.
Synonyms:	BLCPMG; PPP1R115



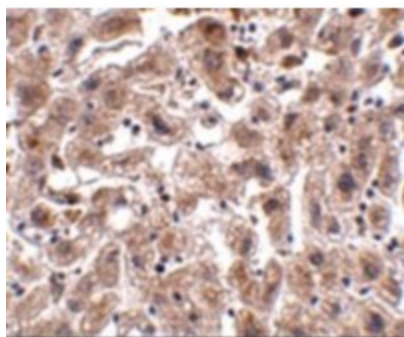
[View online »](#)

Product images:

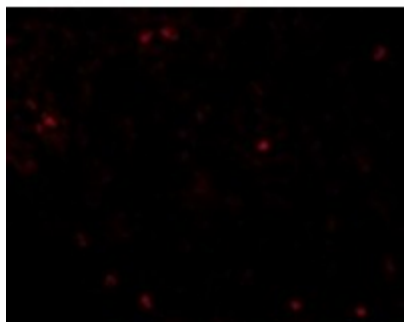
Western blot analysis of OCLN in human liver tissue lysate with OCLN antibody at 1ug/ml.



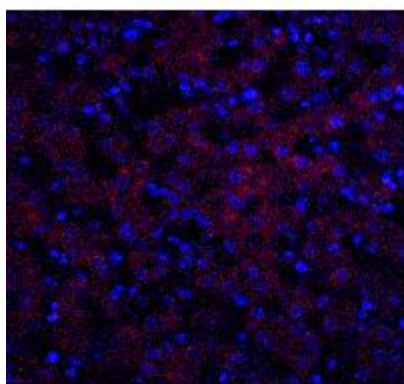
Immunohistochemistry of OCLN in mouse brain tissue with OCLN Antibody at 5ug/ml.



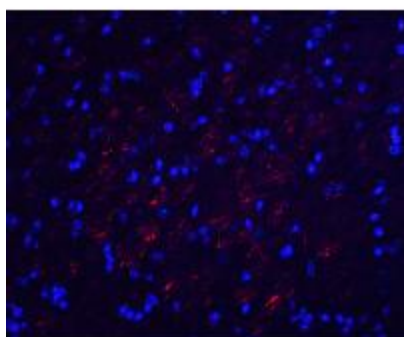
Immunohistochemistry of OCLN in human liver tissue with OCLN antibody at 2.5ug/ml.



Immunofluorescence of OCLN in Human Liver tissue with OCLN antibody at 20ug/ml.



Immunofluorescence of OCLN in human liver tissue with OCLN antibody at 20ug/ml.



Immunofluorescence of OCLN in mouse brain tissue with OCLN antibody at 20ug/ml.