

## Product datasheet for **TA306784**

### GPR3 Rabbit Polyclonal Antibody

#### Product data:

Product Type:	Primary Antibodies
Applications:	IF, IHC, WB
Recommended Dilution:	WB: 1 - 2 ug/mL, ICC: 2.5 ug/mL, IF: 20 ug/mL
Reactivity:	Human, Mouse, Rat
Host:	Rabbit
Isotype:	IgG
Clonality:	Polyclonal
Immunogen:	GPR3 antibody was raised against a 13 amino acid peptide from near the carboxy terminus of human GPR3.
Formulation:	PBS containing 0.02% sodium azide.
Concentration:	1 mg/ml
Purification:	Affinity chromatography purified via peptide column
Conjugation:	Unconjugated
Storage:	Store at -20°C as received.
Stability:	Stable for 12 months from date of receipt.
Gene Name:	G protein-coupled receptor 3
Database Link:	<a href="#">NP_005272</a> <a href="#">Entrez Gene 14748 Mouse</a> <a href="#">Entrez Gene 266769 Rat</a> <a href="#">Entrez Gene 2827 Human</a> <a href="#">P46089</a>



[View online »](#)

**Background:**

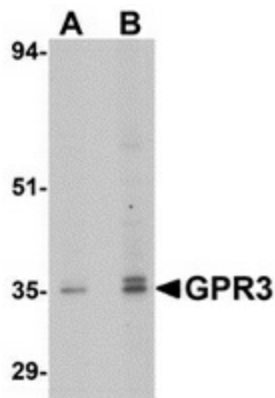
GPR3, also known as ACCA, is a G-protein coupled receptor that constitutively activates adenylate cyclase and is highly expressed in the central nervous system. Overexpression of GPR3 stimulates the production of amyloid- $\beta$  peptide (Ab), the deposition of which is one of the pathological hallmarks of Alzheimer's disease (AD), while the ablation of GPR3 prevented the accumulation of Ab in vitro and in an AD mouse model. This is of particular interest because of the proximity of a reported candidate Alzheimer's disease (AD) locus, suggesting that GPR3 may be a potential therapeutic target for the treatment of AD. GPR3 has also been shown to block the proliferation of cerebellar granule cell precursors (GCP) during postnatal development by inhibiting the Shh-induced proliferation of GCP, indicating that GPR3 activation may represent one of the signals that triggers the postnatal cell cycle exit and terminal differentiation of GPCs.

**Synonyms:**

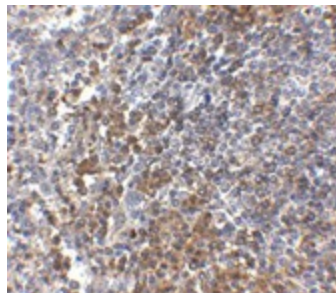
ACCA

**Protein Families:**

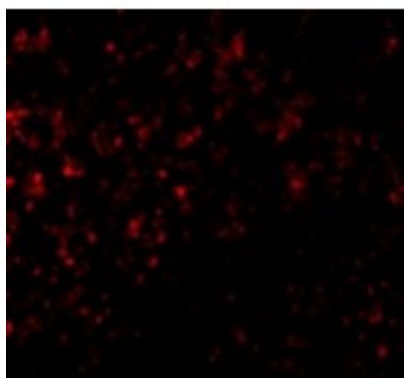
Druggable Genome, GPCR, Transmembrane

**Product images:**

Western blot analysis of GPR3 in EL4 cell lysate with GPR3 antibody at (A) 1 and (B) 2  $\mu$ g/ml.



Immunohistochemistry of GPR3 in human spleen tissue with GPR3 antibody at 2.5  $\mu$ g/ml.



Immunofluorescence of GPR3 in Human Spleen cells with GPR3 antibody at 20 µg/mL.