

Product datasheet for **TA306782**

RSPO1 Rabbit Polyclonal Antibody

Product data:

Product Type:	Primary Antibodies
Applications:	IF, IHC, WB
Recommended Dilution:	WB: 1 - 2 ug/mL, ICC: 2.5 ug/mL, IF: 20 ug/mL
Reactivity:	Human, Mouse, Rat
Host:	Rabbit
Isotype:	IgG
Clonality:	Polyclonal
Immunogen:	RSPO1 antibody was raised against a 16 amino acid peptide from near the amino terminus of human RSPO1.
Formulation:	PBS containing 0.02% sodium azide.
Concentration:	1ug/ul
Purification:	Affinity chromatography purified via peptide column
Conjugation:	Unconjugated
Storage:	Antibody can be stored at 4°C up to one year. Antibodies should not be exposed to prolonged high temperatures.
Stability:	Stable for 12 months from date of receipt.
Gene Name:	R-spondin 1
Database Link:	NP_001033722 Entrez Gene 192199 Mouse Entrez Gene 313589 Rat Entrez Gene 284654 Human Q2MKA7



[View online »](#)

Background:

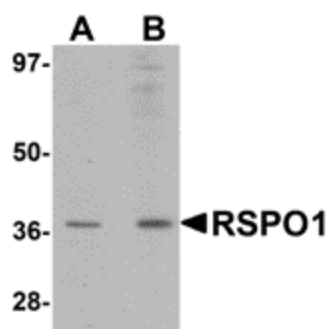
RSPO1 is a member of a family of secreted growth factors that can operate through the canonical Wnt signaling pathway by stabilizing the intracellular b-catenin, thereby regulating functions mediated by b-catenin such as cell fate decisions and embryonic patterning. RSPO1 was recently identified through linkage analysis to be involved in sex determination and mammalian ovarian development. RSPO1 is thought to regulate cellular responsiveness to Wnt ligands by modulating the cell-surface expression of the Wnt co-receptor LRP6 by interfering with the DKK/Kremen-mediated internalization of LRP6 through an interaction with Kremen, resulting in increased LRP6 cell-surface levels. At least two isoforms of RSPO1 are known to exist. RSPO1 antibody will not cross-react with RSPO family members.

Synonyms:

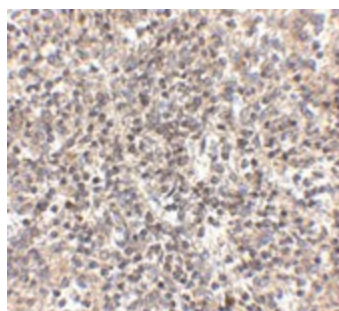
CRISTIN3; RSPO

Protein Families:

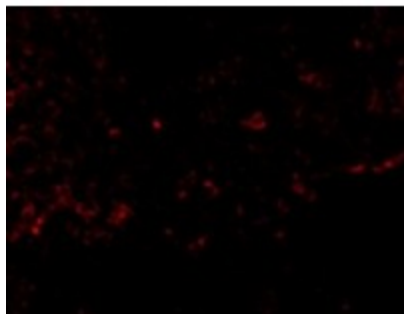
Secreted Protein

Product images:

Western blot analysis of RSPO1 in rat spleen tissue lysate with RSPO1 antibody at (A) 1 and (B) 2 ug/ml.



Immunohistochemistry of RSPO1 in human spleen tissue with RSPO1 antibody at 2.5 ug/ml.



Immunofluorescence of RSPO1 in Human Spleen tissue with RSPO1 antibody at 20 ug/mL.