

## Product datasheet for **TA306780**

### SH3BP4 Rabbit Polyclonal Antibody

#### Product data:

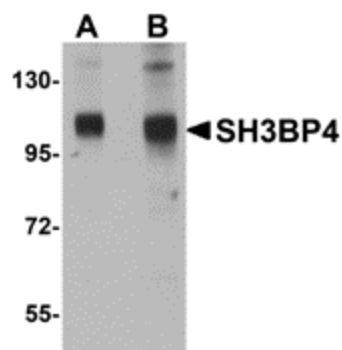
Product Type:	Primary Antibodies
Applications:	IHC, WB
Recommended Dilution:	WB: 1 - 2 ug/mL, ICC: 5 ug/mL
Reactivity:	Human, Mouse, Rat
Host:	Rabbit
Isotype:	IgG
Clonality:	Polyclonal
Immunogen:	SH3BP4 antibody was raised against an 18 amino acid peptide from near the carboxy terminus of human SH3BP4.
Formulation:	PBS containing 0.02% sodium azide.
Concentration:	1ug/ul
Purification:	Affinity chromatography purified via peptide column
Conjugation:	Unconjugated
Storage:	Store at -20°C as received.
Stability:	Stable for 12 months from date of receipt.
Gene Name:	SH3 domain binding protein 4
Database Link:	<a href="#">NP_055336</a> <a href="#">Entrez Gene 64634 Rat</a> <a href="#">Entrez Gene 98402 Mouse</a> <a href="#">Entrez Gene 23677 Human</a> <a href="#">Q9P0V3</a>
Background:	SH3BP4 was initially isolated as a novel cDNA using differential display analysis using cultured human corneal fibroblasts. The protein contains three Asn-Pro-Phe (NPF) motifs, an SH3 domain, a PXXP motif, a bipartite nuclear targeting signal, and a tyrosine phosphorylation site. SH3BP4 has been shown to interact with specific endocytic proteins such as clathrin, dynamin, and the transferrin receptor (TfR) and localizes to TfR-containing coated pits and vesicles. It is thought to be involved in cargo-specific control of clathrin-mediated endocytosis, specifically controlling the internalization of TfR. At least two isoforms of SH3BP4 are known to exist.
Synonyms:	BOG25; TTP



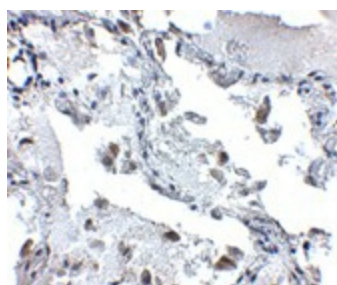
[View online »](#)

Protein Families: Druggable Genome

### Product images:



Western blot analysis of SH3BP4 in rat lung tissue lysate with SH3BP4 antibody at (A) 1 and (B) 2 ug/ml.



Immunohistochemistry of SH3BP4 in human lung tissue with SH3BP4 antibody at 5 ug/ml.