

## Product datasheet for **TA306779**

### SCF (KITLG) Rabbit Polyclonal Antibody

#### Product data:

Product Type:	Primary Antibodies
Applications:	IF, IHC, WB
Recommended Dilution:	WB: 1 - 2 ug/mL, ICC: 2.5 ug/mL, IF: 20 ug/mL
Reactivity:	Human, Mouse, Rat
Host:	Rabbit
Isotype:	IgG
Clonality:	Polyclonal
Immunogen:	SCF antibody was raised against an 18 amino acid peptide from near the center of human SCF.
Formulation:	PBS containing 0.02% sodium azide.
Concentration:	1ug/ul
Purification:	Affinity chromatography purified via peptide column
Conjugation:	Unconjugated
Storage:	Store at -20°C as received.
Stability:	Stable for 12 months from date of receipt.
Gene Name:	KIT ligand
Database Link:	<a href="#">NP_000890</a> <a href="#">Entrez Gene 60427 Rat</a> <a href="#">Entrez Gene 4254 Human</a> <a href="#">P21583</a>
Background:	Stem cell factor (SCF) is the ligand of the c-Kit oncogene and is expressed by various structural and inflammatory cells in the airways. Binding of SCF by the c-Kit receptor leads to homodimerization of the receptor and the activation of signalling pathways such as PI-3, PLC-g, Jak/STAT, and MAP kinase pathways. SCF expression leads to the induction of mast cell survival and the expression and release of histamine, pro-inflammatory cytokines and chemokines. The inhibition of the SCF/c-Kit pathway leads to a decrease in histamine levels, mast cell and eosinophil infiltration, IL-4 production and airway hyperresponsiveness, suggesting this pathway may be a useful therapeutic target in inflammatory diseases such as asthma. At least two isoforms of SCF are known to exist.



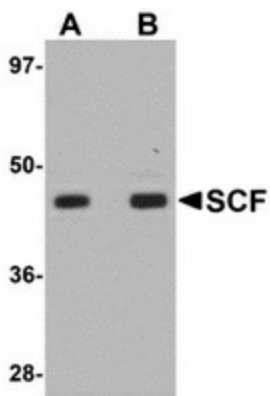
[View online »](#)

**Synonyms:** FPH2; FPHH; Kitl; KL-1; MGF; SCF; SF; SHEP7

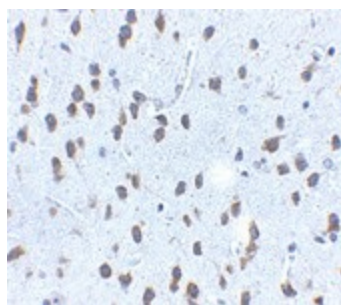
**Protein Families:** Druggable Genome, Transmembrane

**Protein Pathways:** Cytokine-cytokine receptor interaction, Hematopoietic cell lineage, Melanogenesis, Pathways in cancer

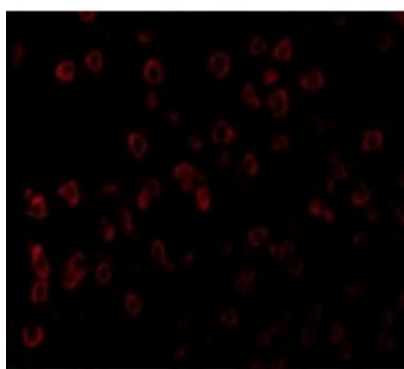
**Product images:**



Western blot analysis of SCF in rat brain tissue lysate with SCF antibody at (A) 1 and (B) 2 ug/ml.



Immunohistochemistry of SCF in mouse brain tissue with SCF antibody at 2.5 ug/ml.



Immunofluorescence of SCF in Human Brain tissue with SCF antibody at 20 ug/mL.