

Product datasheet for **TA306777**

AP2M1 Chicken Polyclonal Antibody

Product data:

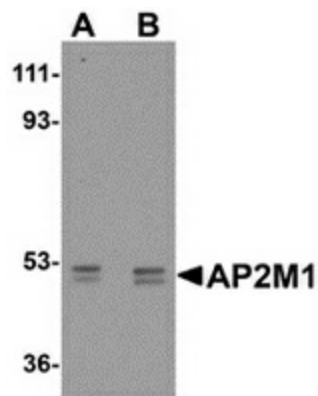
Product Type:	Primary Antibodies
Applications:	IF, IHC, WB
Recommended Dilution:	WB: 1 - 2 ug/mL, ICC: 2.5 ug/mL, IF: 20 ug/mL
Reactivity:	Human, Mouse, Rat
Host:	Chicken
Isotype:	IgY
Clonality:	Polyclonal
Immunogen:	AP2M1 antibody was raised against a 16 amino acid peptide near the carboxy terminus of human AP2M1.
Formulation:	PBS containing 0.02% sodium azide.
Concentration:	1ug/ul
Purification:	Affinity chromatography purified via peptide column
Conjugation:	Unconjugated
Storage:	Store at -20°C as received.
Stability:	Stable for 12 months from date of receipt.
Gene Name:	adaptor related protein complex 2 mu 1 subunit
Database Link:	NP_004059 Entrez Gene 1173 Human Q96CW1
Background:	The heterotetrameric coat assembly protein complex, also known as the adaptor-related protein complex 2 (AP-2), belongs to the adaptor complexes medium subunits family. The mu 1 subunit of the AP-2 complex (AP2M1) is required for the activity of a vacuolar ATPase, which is responsible for proton pumping occurring in the acidification of endosomes and lysosomes. AP2M1 has also been shown to associate with the HIV-1 protein Nef, suggesting that Nef may use AP-2 complex to enhance the rate of endocytosis of both CD4 and class I MHC. AP2M1 may also play an important role in regulating the intracellular trafficking and function of cytotoxic T-lymphocyte associated (CTLA)-4 protein. At least two isoforms of AP2M1 are known to exist.



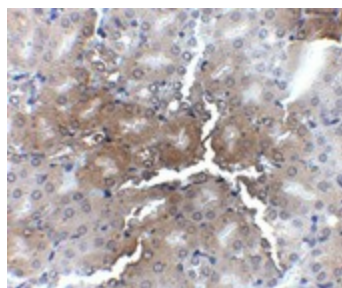
[View online »](#)

Synonyms: AP50; CLAPM1; mu2

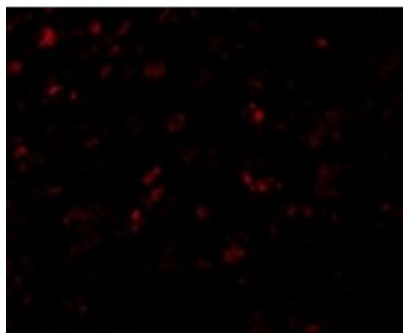
Product images:



Western blot analysis of AP2M1 in human kidney tissue lysate with AP2M1 antibody at (A) 1 and (B) 2 ug/ml.



Immunohistochemistry of AP2M1 in mouse kidney tissue with AP2M1 antibody at 2.5 ug/ml.



Immunofluorescence of AP2M1 in Mouse Kidney cells with AP2M1 antibody at 20 ug/mL.