

## Product datasheet for **TA306776**

### Albumin (ALB) Chicken Polyclonal Antibody

#### Product data:

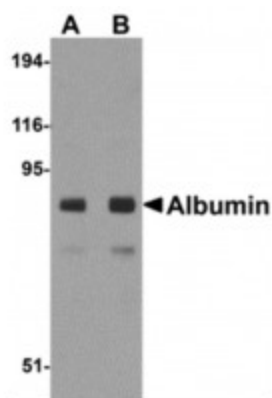
|                       |   |
|-----------------------|---|
| Product Type:         | Primary Antibodies  |
| Applications:         | IF, IHC, WB   |
| Recommended Dilution: | WB: 1 - 2 ug/mL, ICC: 2.5 ug/mL, IF: 20 ug/mL   |
| Reactivity:           | Human, Mouse, Rat   |
| Host:                 | Chicken   |
| Isotype:              | IgY   |
| Clonality:            | Polyclonal  |
| Immunogen:            | Albumin antibody was raised against a 13 amino acid synthetic peptide near the center of human Albumin. The immunogen is located within amino acids 340 - 390 of Albumin.   |
| Formulation:          | PBS containing 0.02% sodium azide.  |
| Concentration:        | 1 mg/ml   |
| Purification:         | Affinity chromatography purified via peptide column   |
| Conjugation:          | Unconjugated  |
| Storage:              | Antibody can be stored at 4°C up to one year. Antibodies should not be exposed to prolonged high temperatures.  |
| Stability:            | Stable for 12 months from date of receipt.  |
| Gene Name:            | albumin   |
| Database Link:        | <a href="#">NP_000468</a><br><a href="#">Entrez Gene 11657 Mouse</a> <a href="#">Entrez Gene 24186 Rat</a> <a href="#">Entrez Gene 213 Human</a><br><a href="#">P02768</a>  |
| Background:           | Albumin is a soluble, monomeric protein which comprises about one-half of the blood serum protein. It functions primarily as a carrier protein for steroids, fatty acids, and thyroid hormones and plays a role in stabilizing extracellular fluid volume. Albumin is synthesized in the liver as prealbumin which has an N-terminal peptide that is removed before the nascent protein is released from the rough endoplasmic reticulum. The resulting product, proalbumin, is in turn cleaved in the Golgi vesicles to produce the secreted albumin. At least two isoforms of Albumin are known to exist. |
| Synonyms:             | HSA; PRO0883; PRO0903; PRO1341  |



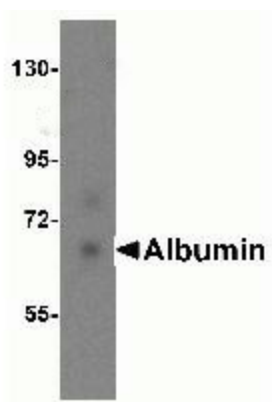
[View online »](#)

Protein Families: Secreted Protein

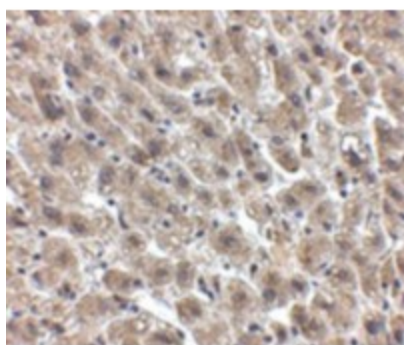
### Product images:



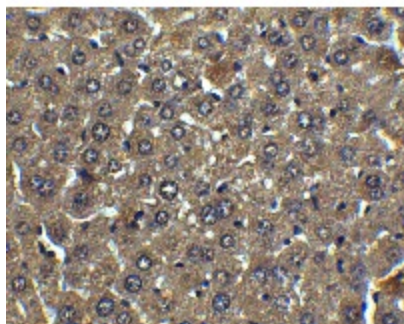
Western blot analysis of Albumin in mouse liver tissue lysate with Albumin antibody at (A) 1 and (B) 2ug/ml.



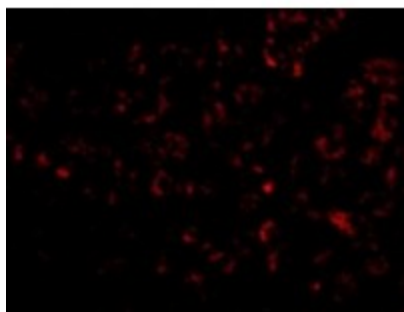
Western blot analysis of Albumin expression in human liver tissue lysate with Albumin antibody at 0.25ug/ml.



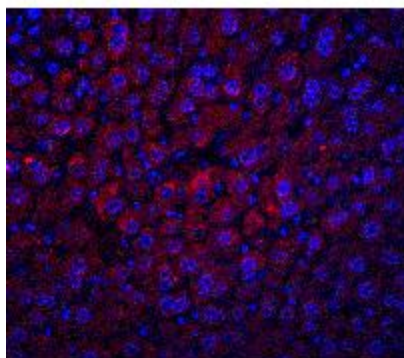
Immunohistochemistry of Albumin in human liver tissue with Albumin antibody at 2.5ug/ml.



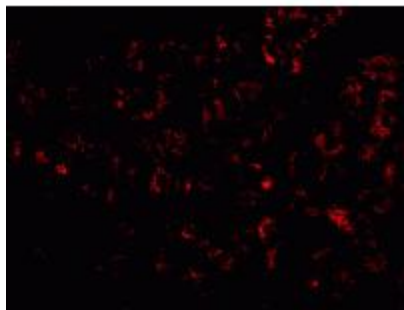
Immunohistochemistry of Albumin in mouse liver tissue with Albumin antibody at 5ug/ml.



Immunofluorescence of Albumin in mouse liver tissue with Albumin antibody at 20ug/ml.



Immunofluorescence of Albumin in mouse liver tissue with Albumin antibody at 20ug/ml.



Immunofluorescence of Albumin in human liver tissue with Albumin antibody at 20ug/ml.