

Product datasheet for **TA306774**

Her2 (ERBB2) Chicken Polyclonal Antibody

Product data:

Product Type:	Primary Antibodies
Applications:	IF, IHC, WB
Recommended Dilution:	WB: 1 - 2 ug/mL, ICC: 2.5 ug/mL, IF: 20 ug/mL
Reactivity:	Human, Mouse, Rat
Host:	Chicken
Isotype:	IgY
Clonality:	Polyclonal
Immunogen:	erbB-2 antibody was raised against a 19 amino acid peptide near the carboxy terminus of human erbB-2.
Formulation:	PBS containing 0.02% sodium azide.
Concentration:	1ug/ul
Purification:	Affinity chromatography purified via peptide column
Conjugation:	Unconjugated
Storage:	Store at -20°C as received.
Stability:	Stable for 12 months from date of receipt.
Gene Name:	erb-b2 receptor tyrosine kinase 2
Database Link:	NP_004439 Entrez Gene 2064 Human P04626



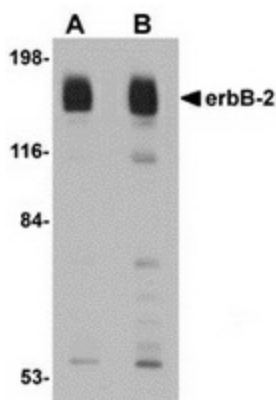
[View online »](#)

Background:

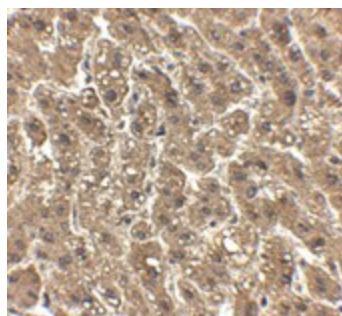
The ErbB family consists of four closely related tyrosine kinase receptors that act as potent mediators of normal cell growth and development. Aberrant expression or function of one or more of these receptors can play a major role in the development and evolution of cancer. ErbB-2, also known as HER2, has been implicated in the evolution of both breast and gastric cancers, and is evident in other cancer types such as ovarian and salivary gland tumors. ErbB-2 possesses an active tyrosine kinase domain, but no direct ligand has been identified yet. ErbB-2 is the preferred binding partner to the other members of the ErbB family and is thought to act primarily through the Ras-MAPK, PI3k-PKB/Akt, and PLC-PKC signaling pathways. Numerous anti-cancer strategies have been employed against erbB-2, such as antibody-based therapies to prevent ligand binding or receptor activation through dimerization, antibody-dependent cell mediated cytotoxicity, in addition to direct kinase inhibition to prevent molecular activation/downstream signaling.

Synonyms:

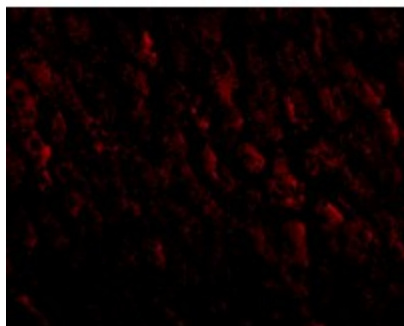
CD340; HER-2; HER2; MLN 19; NEU; neu; NGL; TKR1

Product images:

Western blot analysis of erbB-2 in rat liver tissue lysate with erbB-2 antibody at (A) 1 and (B) 2 ug/ml.



Immunohistochemistry of erbB-2 in human liver tissue with erbB-2 antibody at 2.5 ug/ml.



Immunofluorescence of ERBB2 in human liver tissue with ERBB2 antibody at 20 ug/mL.