

Product datasheet for **TA306773**

SIGLEC11 Rabbit Polyclonal Antibody

Product data:

Product Type:	Primary Antibodies
Applications:	IF, IHC, WB
Recommended Dilution:	WB: 1 ug/mL, ICC: 5 ug/mL, IF: 20 ug/mL
Reactivity:	Human
Host:	Rabbit
Isotype:	IgG
Clonality:	Polyclonal
Immunogen:	Siglec11 antibody was raised against an 18 amino acid peptide from near the carboxy terminus of human Siglec11.
Formulation:	PBS containing 0.02% sodium azide.
Concentration:	1ug/ul
Purification:	Affinity chromatography purified via peptide column
Conjugation:	Unconjugated
Storage:	Store at -20°C as received.
Stability:	Stable for 12 months from date of receipt.
Gene Name:	sialic acid binding Ig like lectin 11
Database Link:	NP_443116 Entrez Gene 114132 Human Q96RL6



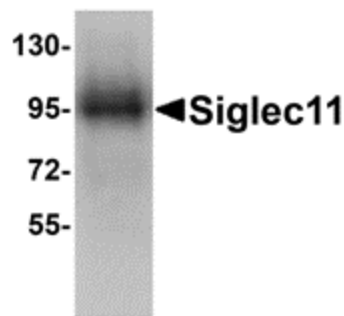
[View online »](#)

Background:

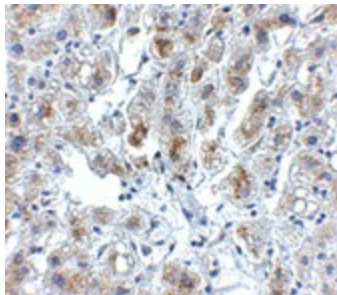
Siglecs are sialic acid-binding lectins of the immunoglobulin superfamily that are mainly expressed in cells of the hematopoietic system. Siglec11 is unlike other siglecs in that it binds specifically to α 2-8-linked sialic acids and is not found in peripheral blood leukocytes but instead on macrophages of various tissues. Siglec11 is highly homologous to Siglec10 over their extracellular domain but not over their cytoplasmic domain, suggesting that Siglec11 arose through gene duplication followed by a recombination event involving another ancestral siglec gene. Following treatment of Siglec11-transfected cells with pervanadate, Siglec11 becomes tyrosine-phosphorylated and strongly associates with SHP-1 and SHP-2. At least five isoforms of Siglec11 are known to exist. Siglec11 antibody will not cross-react with Siglec10. Despite its predicted size, Siglec11 migrates at a higher than expected molecular weight in SDS-PAGE.

Synonyms:

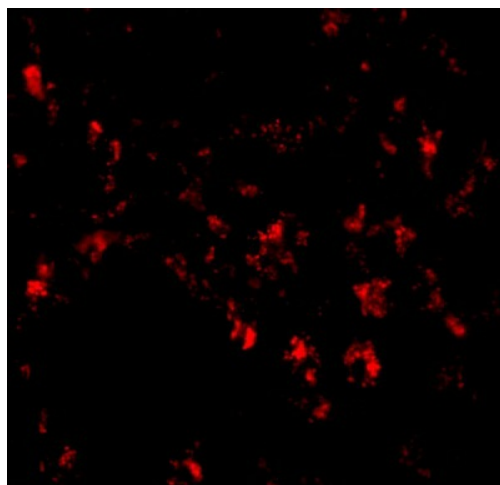
Siglec-11

Product images:

Western blot analysis of Siglec11 in HepG2 cell lysate with Siglec11 antibody at 1 ug/ml.



Immunohistochemistry of Siglec11 in human liver tissue with Siglec11 antibody at 5 ug/ml.



Immunofluorescence of SIGLEC11 in human liver tissue with SIGLEC11 antibody at 20 ug/mL.