

Product datasheet for **TA306771**

RNF168 Rabbit Polyclonal Antibody

Product data:

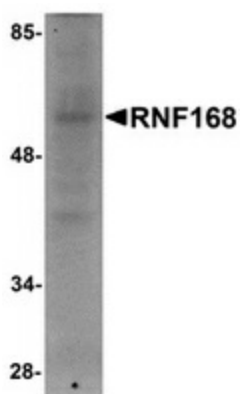
Product Type:	Primary Antibodies
Applications:	WB
Recommended Dilution:	WB: 1 ug/mL
Reactivity:	Human, Mouse
Host:	Rabbit
Isotype:	IgG
Clonality:	Polyclonal
Immunogen:	RNF168 antibody was raised against an 18 amino acid peptide from near the carboxy terminus of human RNF168.
Formulation:	PBS containing 0.02% sodium azide.
Concentration:	1ug/ul
Purification:	Affinity chromatography purified via peptide column
Conjugation:	Unconjugated
Storage:	Store at -20°C as received.
Stability:	Stable for 12 months from date of receipt.
Gene Name:	ring finger protein 168
Database Link:	NP_689830 Entrez Gene 70238 Mouse Entrez Gene 165918 Human Q8IYW5
Background:	RNF168 was identified as a chromatin-associated RING finger protein that acts as a ubiquitin ligase both in vitro and in vivo. RNF168 targets histones H2A and H2AX, but not H2B, forming K63 polyubiquitin chains. Upon formation of DNA double strand breaks, RNF168 is recruited to the site of DNA damage where it co-localizes with gammaH2AX and 53BP1 in an RNF8-dependent manner. This localization of RNF168 increases the local concentration of ubiquitinated proteins to the threshold required for retention of the proteins 53BP1 and BRCA1, facilitating the downstream signaling cascade. Thus, RNF168 defines a new pathway demonstrating a functional cooperation between E3 ligases in genome maintenance. At least three isoforms of RNF168 are known to exist.



[View online »](#)

Synonyms: hRNF168

Product images:



Western blot analysis of RNF168 in human brain tissue lysate with RNF168 antibody at 1 ug/ml.

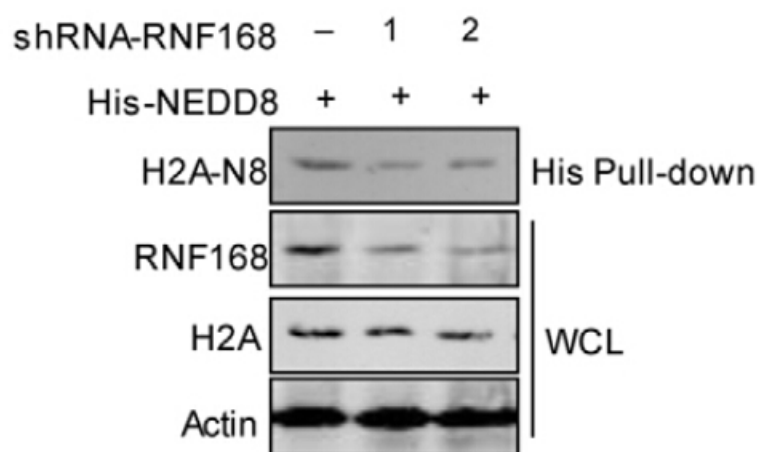


Figure from citation: Western Blot of RNF168 protein level by using anti-RNF168 antibody in HEK293T cells. [View Citation](#)