

## Product datasheet for **TA306765**

### FKBP15 Rabbit Polyclonal Antibody

#### Product data:

Product Type:	Primary Antibodies
Applications:	IF, IHC, WB
Recommended Dilution:	WB: 1 ug/mL, ICC: 2.5 ug/mL, IF: 20 ug/mL
Reactivity:	Human, Mouse, Rat
Host:	Rabbit
Isotype:	IgG
Clonality:	Polyclonal
Immunogen:	FKBP15 antibody was raised against a 15 amino acid peptide from near the amino terminus of human FKBP15.
Formulation:	PBS containing 0.02% sodium azide.
Concentration:	1ug/ul
Purification:	Affinity chromatography purified via peptide column
Conjugation:	Unconjugated
Storage:	Store at -20°C as received.
Stability:	Stable for 12 months from date of receipt.
Gene Name:	FK506 binding protein 15
Database Link:	<a href="#">NP_056073</a> <a href="#">Entrez Gene 338355 Mouse</a> <a href="#">Entrez Gene 362528 Rat</a> <a href="#">Entrez Gene 23307 Human</a> <a href="#">Q5T1M5</a>



[View online »](#)

**Background:**

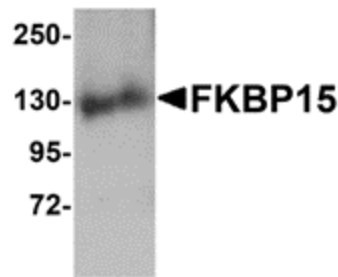
FKBP15, also known as FKBP133, is a member of the FK506-binding protein family, a group of proteins initially identified as immunophilins, targets for the immunosuppressant drugs FK506 and Rapamycin. FKBP15 is expressed in the developing nervous system and contains a domain similar to Wiskott-Aldrich syndrome protein homology region 1 (WH1) in addition to the FK506-binding protein motif. FKBP15 is distributed along the axonal shafts and partially co-localizes with F-actin in the growth cones of dorsal root ganglion neurons; overexpression of FKBP15 resulted in the number of filopodia in transfected neurons, suggesting that FKBP15 modulates growth cone behavior. FKBP15 has also been shown to associate with both microtubules and the actin filament systems and disruption of its expression by RNAi resulted in delayed transport of early endosomes in HeLa cells indicating that FKBP15 is also involved in the transport of early endosomes. At least three isoforms of FKBP15 are known to exist.

**Synonyms:**

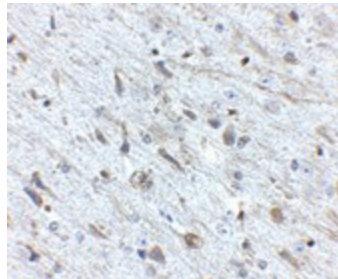
FKBP133; KIAA0674; PPP1R76

**Protein Families:**

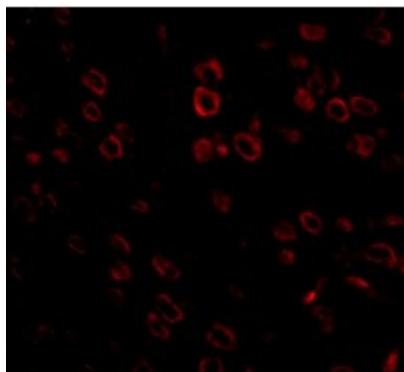
Druggable Genome

**Product images:**


Western blot analysis of FKBP15 in 3T3 cell lysate with FKBP15 antibody at 1 ug/ml.



Immunohistochemistry of FKBP15 in mouse brain tissue with FKBP15 antibody at 2.5 ug/ml.



Immunofluorescence of FKBP15 in mouse brain tissue with FKBP15 antibody at 20 ug/mL.