

Product datasheet for **TA306760**

ZBED3 Rabbit Polyclonal Antibody

Product data:

Product Type:	Primary Antibodies
Applications:	WB
Recommended Dilution:	WB: 1 - 2 ug/mL
Reactivity:	Human, Mouse, Rat
Host:	Rabbit
Isotype:	IgG
Clonality:	Polyclonal
Immunogen:	ZBED3 antibody was raised against a 17 amino acid peptide from near the amino terminus of human ZBED3.
Formulation:	PBS containing 0.02% sodium azide.
Concentration:	1ug/ul
Purification:	Affinity chromatography purified via peptide column
Conjugation:	Unconjugated
Storage:	Store at -20°C as received.
Stability:	Stable for 12 months from date of receipt.
Gene Name:	zinc finger BED-type containing 3
Database Link:	NP_115743

[Entrez Gene 72114 Mouse](#)[Entrez Gene 361881 Rat](#)[Entrez Gene 84327 Human](#)
[Q96IU2](#)

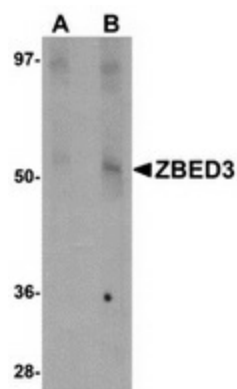
Background:	Axin is a key modulator of the Wnt/beta-catenin pathway and acts as a scaffold protein in phosphorylating and degrading cytoplasmic beta-catenin. ZBED3, a member of the Zinc finger BED-type domain containing superfamily, has been recently identified as an Axin-interacting protein and has been suggested to modulate the Wnt/beta-catenin signaling pathway. RNA interference (RNAi) experiments targeting ZBED3 RNA attenuated Wnt-induced beta-catenin accumulation, lymphoid enhancer binding factor-1-dependent Luciferase reporter activity, and Wnt gene expression. Despite its predicted molecular weight, ZBED3 often migrates at a higher position in SDS-PAGE. This antibody is predicted to have no cross-reactivity to ZBED1 or ZBED2.
-------------	--



[View online »](#)

Synonyms: MGC15435

Product images:



Western blot analysis of ZBED3 in rat lung tissue lysate with ZBED3 antibody at (A) 1 and (B) 2 ug/ml.